

BULLETIN NO. 51
ISSUE 2
AUGUST, 1936

TELETYPESETTER

PARTS
OPERATING UNIT

TELETYPESETTER

CORPORATION

1400 WRIGHTWOOD AVE.,
CHICAGO, U. S. A.



BULLETIN NO. 51
ISSUE 2
AUGUST, 1936

TELETYPESETTER

PARTS
OPERATING UNIT

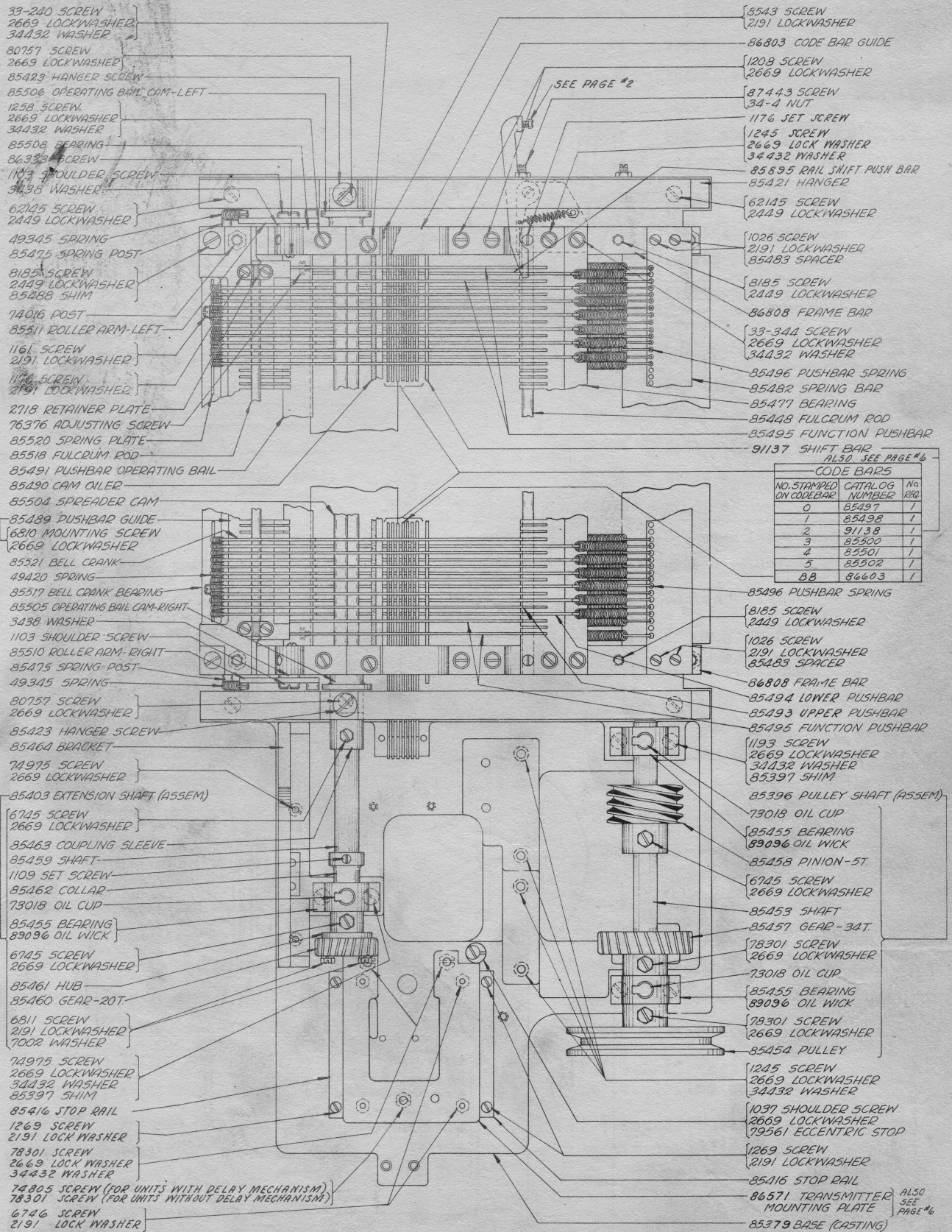
TELETYPESETTER

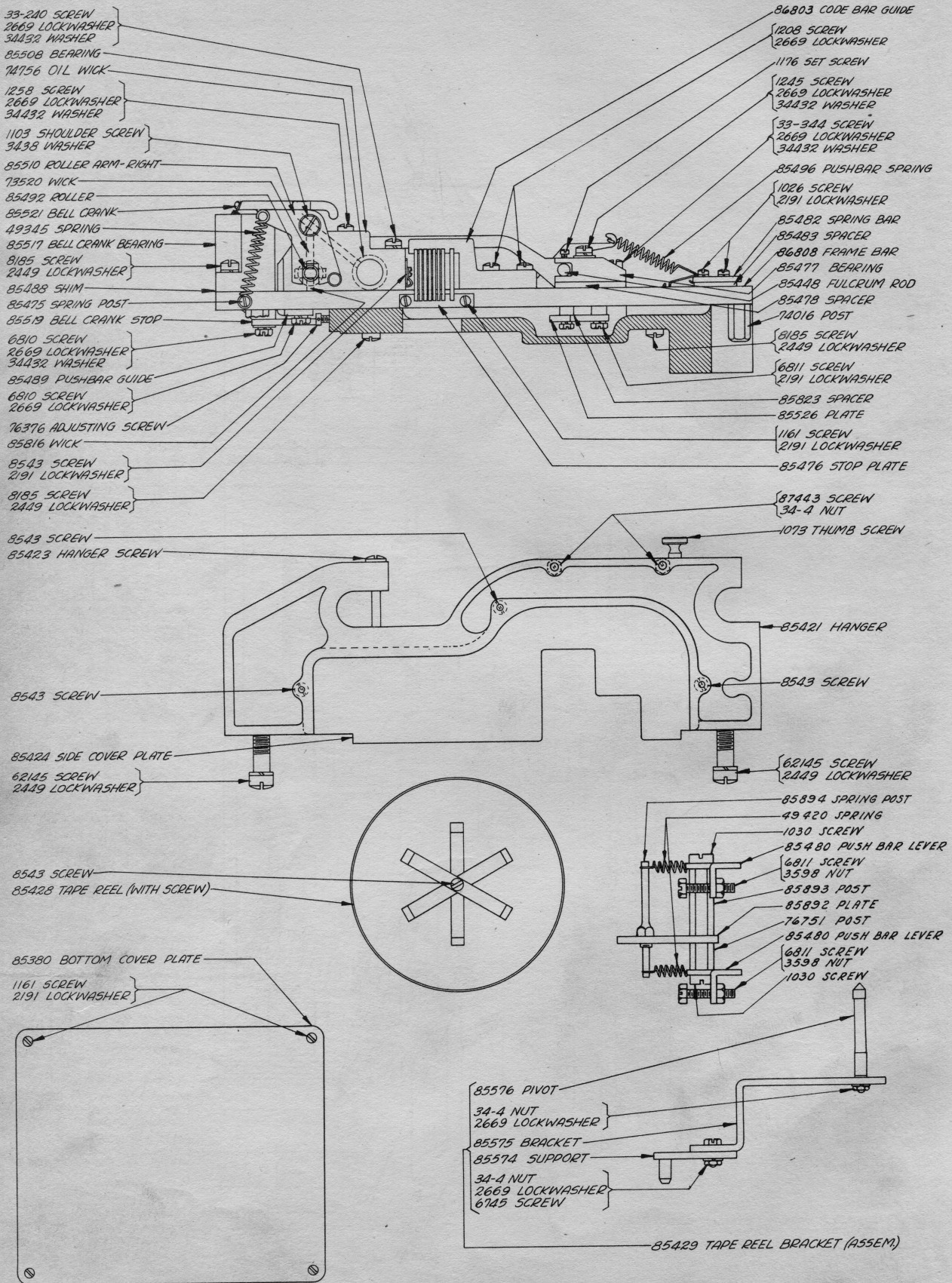
CORPORATION

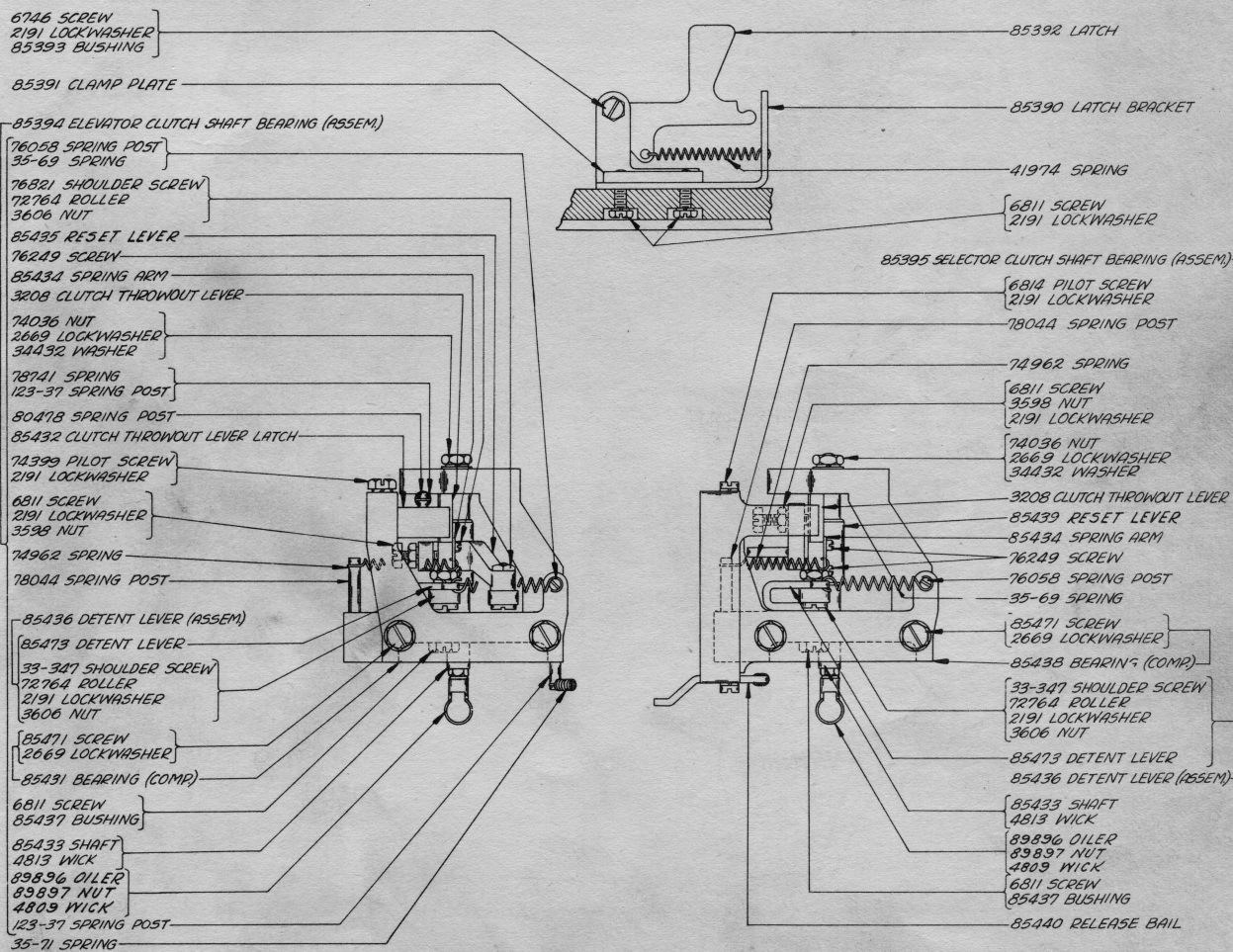
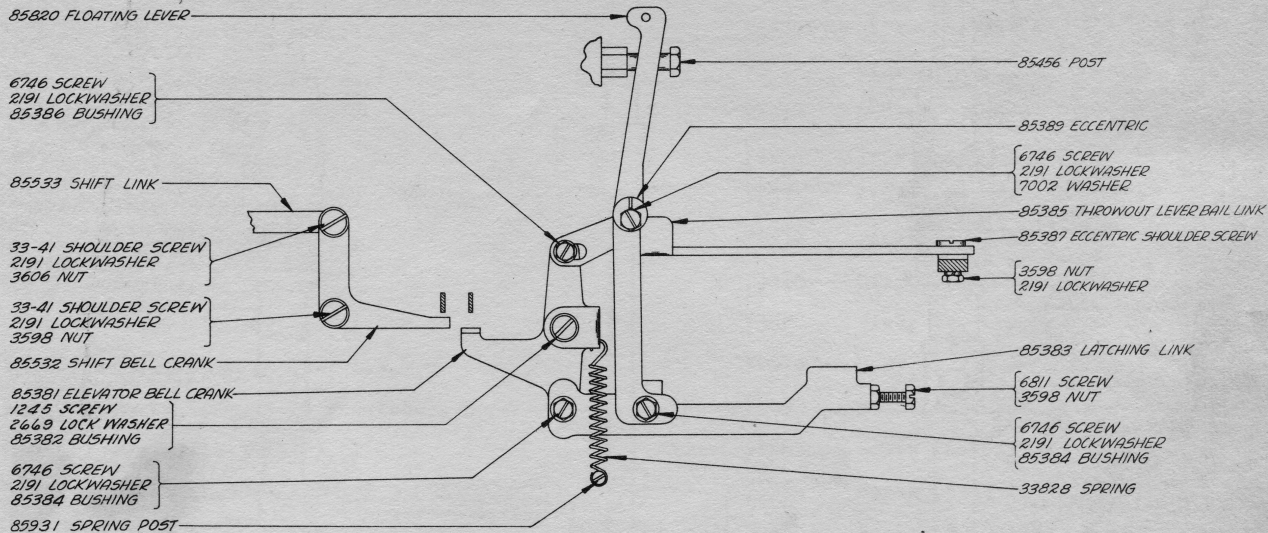
1400 WRIGHTWOOD AVE.,
CHICAGO, U. S. A.

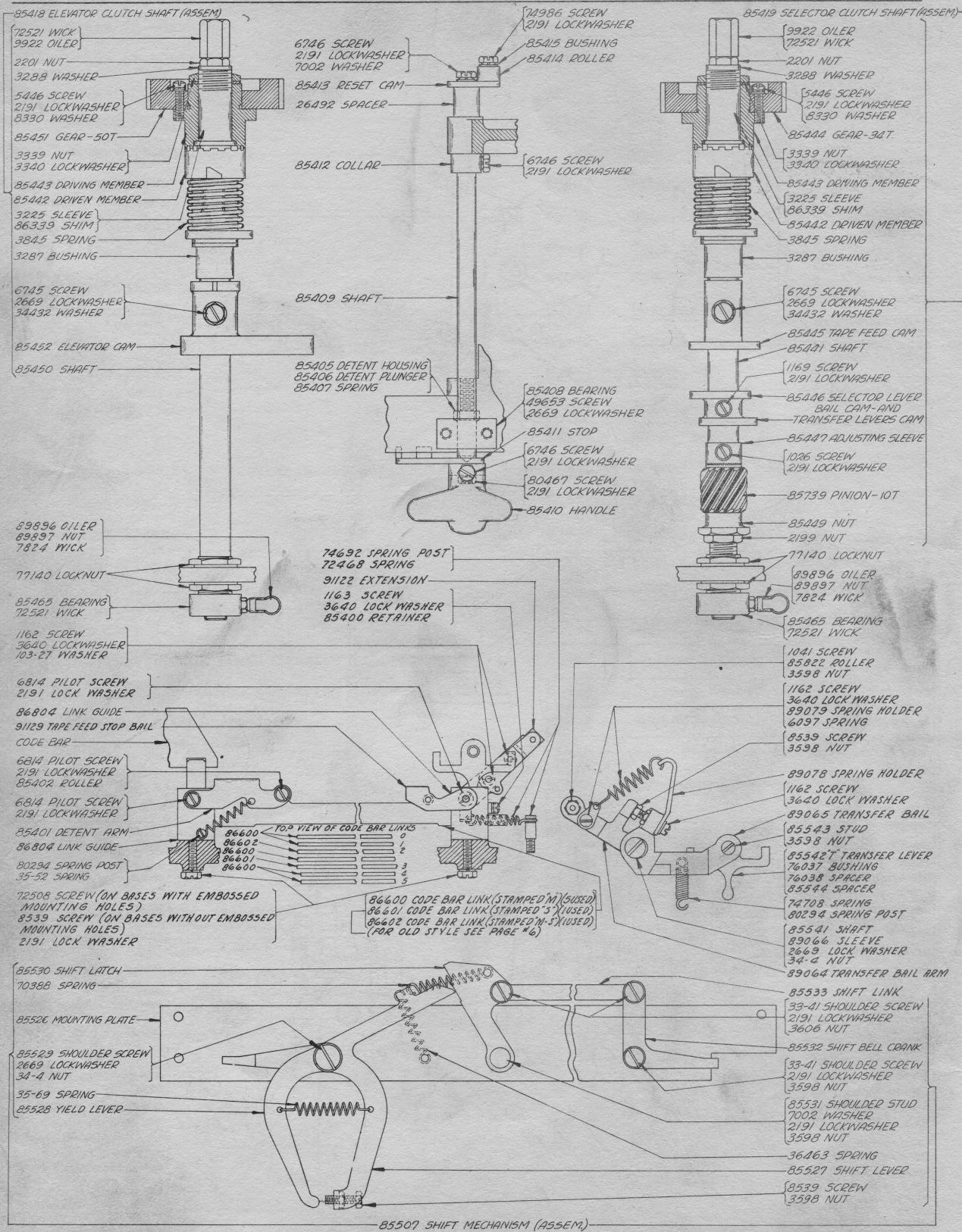
ALPHABETICAL INDEX

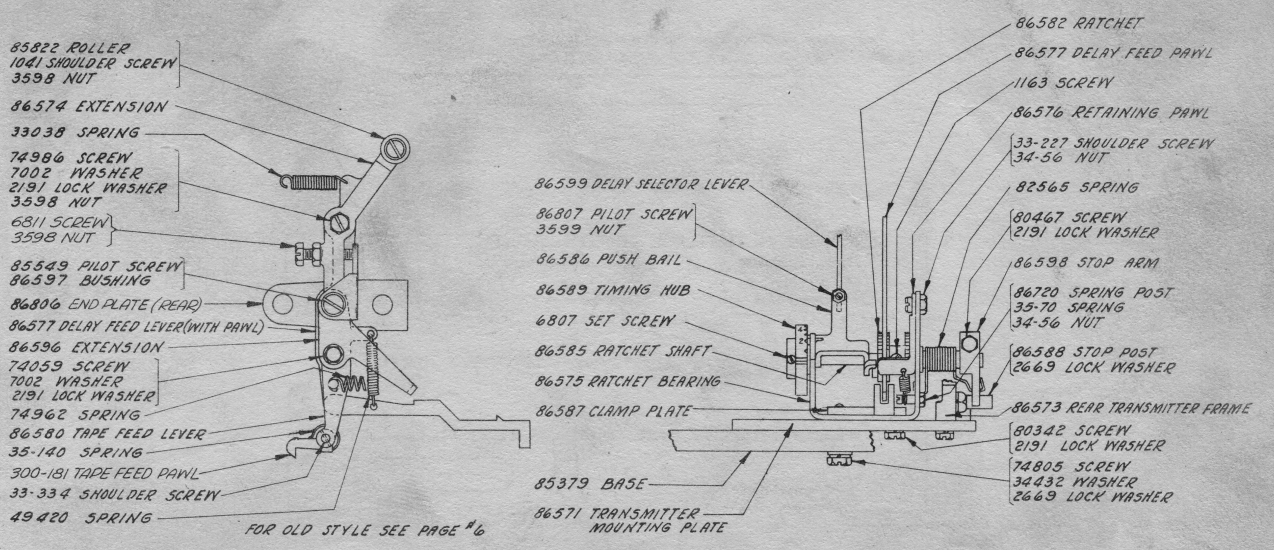
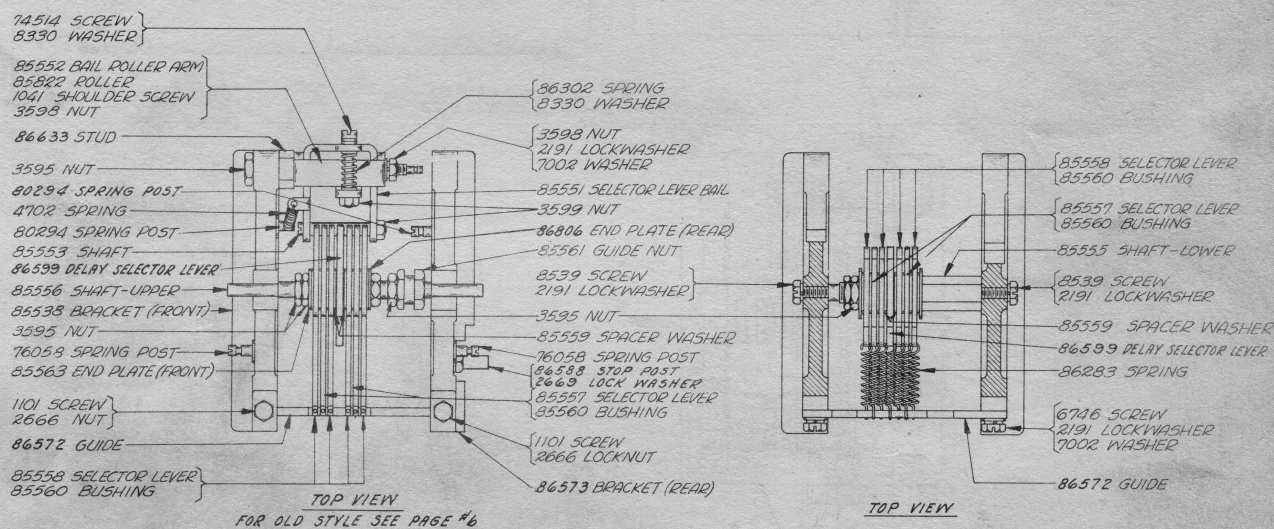
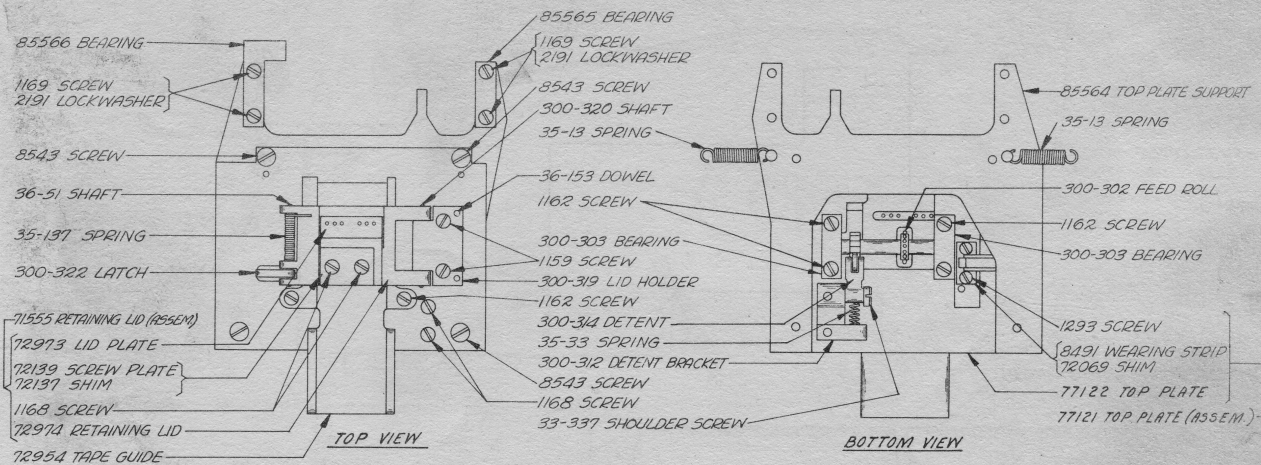
	Page
Base (Operating Unit)	1
Bottom Cover Plate	2
Covers	6
Code Bars	1, 6
Code Bar Links (For Units Equipped with Delay Mechanism)	4
Code Bar Links (For Units Not Equipped with Delay Mech.)	6
Code Bar Link Guides	4
Delay Mechanism	5
Elevator Clutch Shaft (Assem.)	4
Elevator Clutch Shaft Bearing (Assem.)	3
Elevator Clutch Trip Mechanism	3
Elevator Latch and Bracket	3
Extension Shaft (Assem.)	1
Hanger (Assem.)	2
Manual Reset Cam and Detent (Assem.)	4
Numerical Index	8,9,10,11,12
Pulley Shaft (Assem.)	1
Selector Clutch Shaft (Assem.)	4
Selector Clutch Shaft Bearing (Assem.)	3
Selector Unit (Assem.)	1, 2
Shift Mechanism	4
Tape Feed Stop Bail (Assem.)	4
Tape Reel (With Screw)	2
Tape Reel Bracket (Assem.)	2
Tools	7
Transfer Bail (Assem.)	4
Transmitter (Assem.) (For Units Equipped with Delay Mechanism)	5
Transmitter (Assem.) (For Units Not Equipped with Delay Mechanism)	6

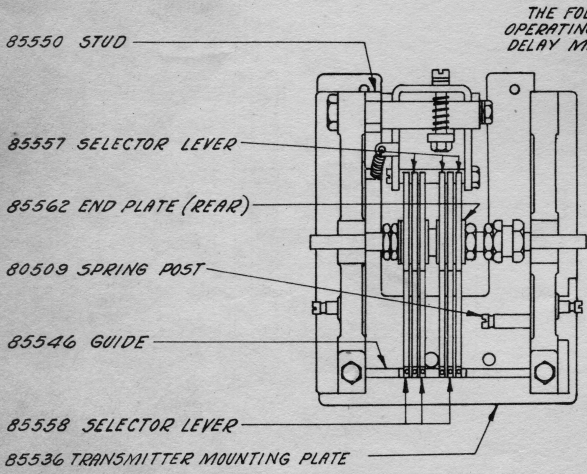
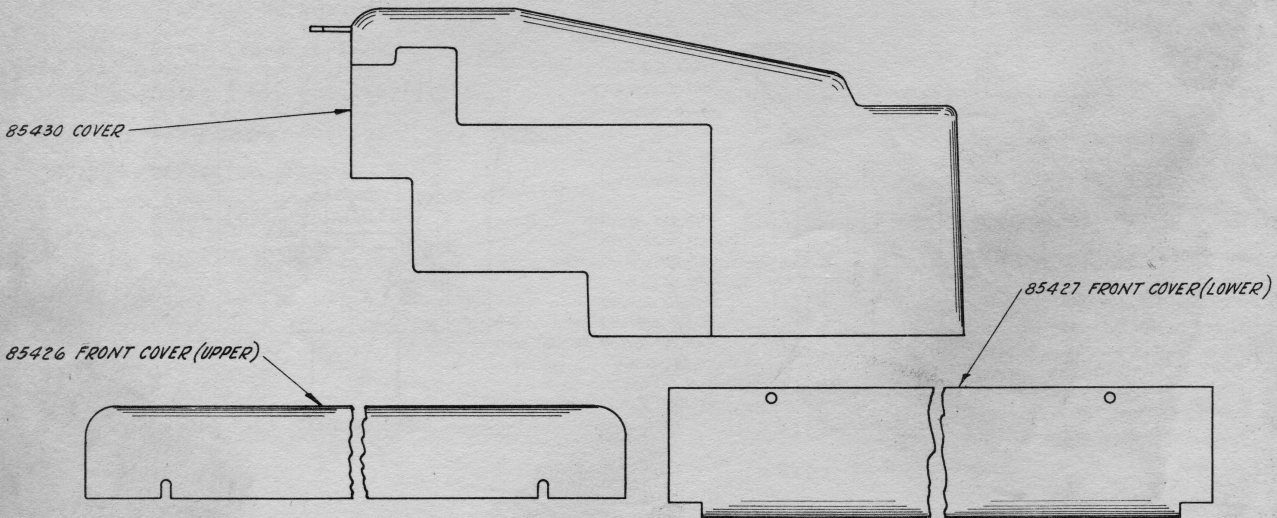




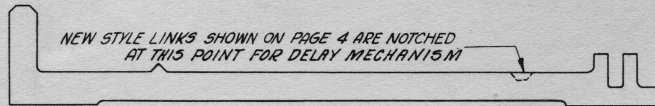
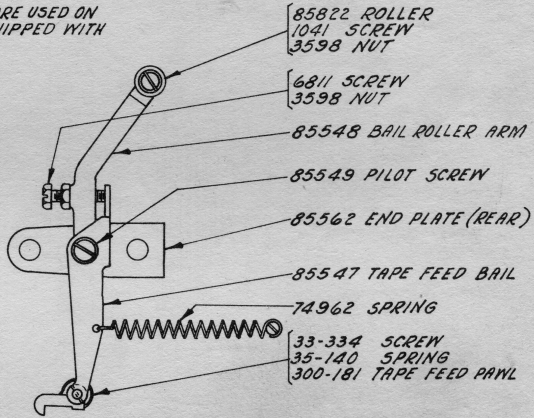




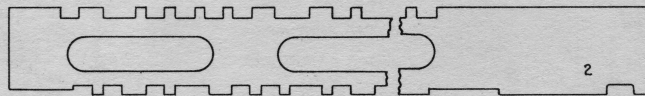




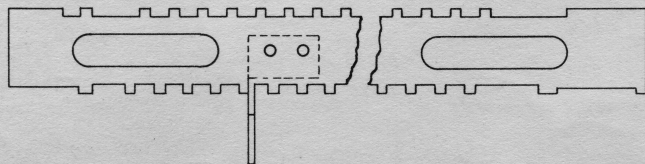
THE FOLLOWING PARTS ARE USED ON OPERATING UNITS NOT EQUIPPED WITH DELAY MECHANISM.



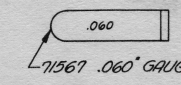
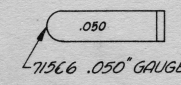
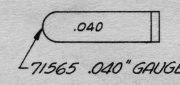
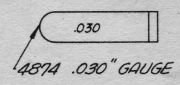
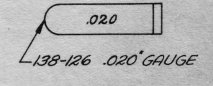
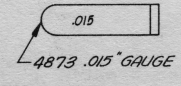
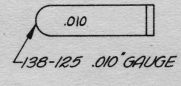
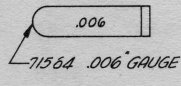
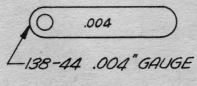
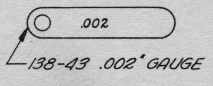
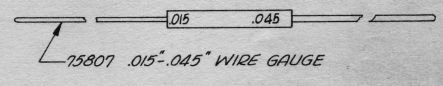
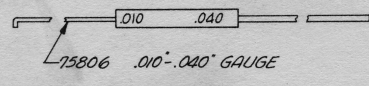
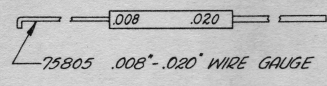
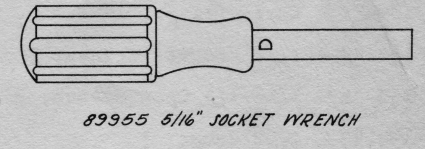
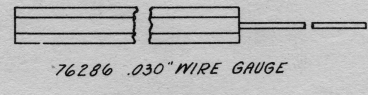
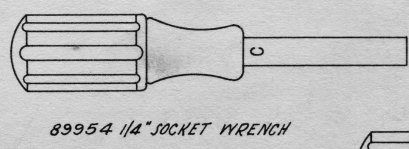
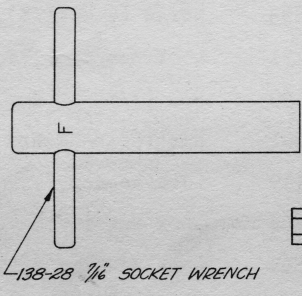
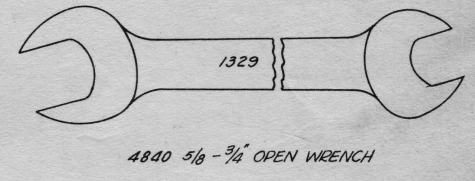
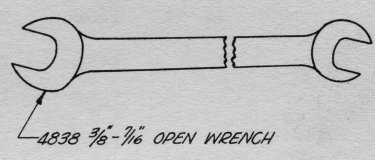
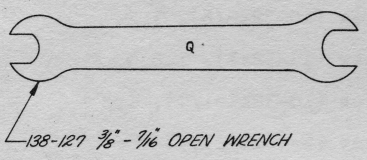
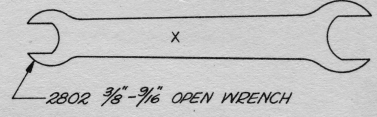
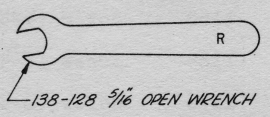
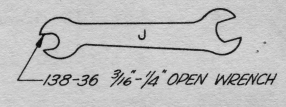
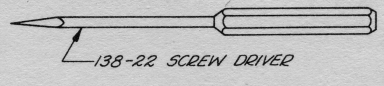
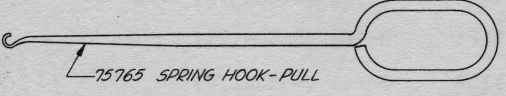
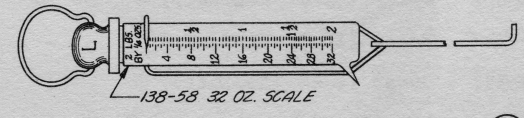
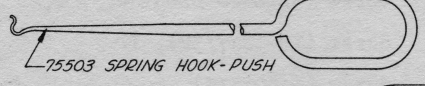
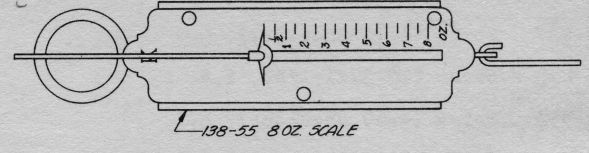
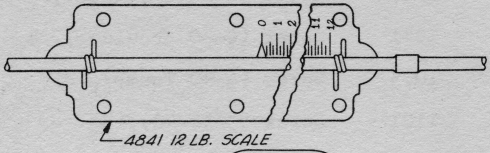
85399 CODE BAR LINK



85499 CODE BAR #2 (ONE CODE DUPLEX RAIL SYSTEM)



85503 SHIFT BAR (ONE CODE DUPLEX RAIL SYSTEM)



86300 SET OF TOOLS

NUMERICAL INDEX

33-41	Screw (6-40 Shoulder), 3,4	1037	Screw (6-40 Shoulder), 1
33-227	Screw (4-40 Shoulder), 5	1041	Screw (6-40 Shoulder), 4,5,6
33-240	Screw (10-32x1-1/8), 1,2	1073	Screw (6-40 Thumb), 2
33-334	Screw (4-40 Shoulder), 5,6	1101	Screw (3/16-40), 5
33-337	Screw (4-40 Shoulder), 5	1103	Screw (3/16-40 Shoulder), 1,2
33-344	Screw (10-32x3/4), 1,2	1109	Screw (10-32x7/32), 1
33-347	Screw (6-40 Shoulder), 3	1159	Screw (4-40x3/8), 5
34-4	Nut (10-32 Hex.), 1,2,4,6	1161	Screw (6-40x1/4), 1,2
34-56	Nut (4-40 Hex.), 5	1162	Screw (4-40x1/4), 4,5
35-13	Spring, 5	1163	Screw (4-40x3/16), 4,5
35-33	Spring, 5	1168	Screw (4-40x5/16), 5
35-52	Spring, 4	1169	Screw (6-40x7/16), 4,5
35-69	Spring, 3,4	1176	Screw (6-40x3/16), 1,2
35-70	Spring, 5	1193	Screw (10-32x7/8), 1
35-71	Spring, 3	1208	Screw (10-32x5/8), 1,2
35-137	Spring, 5	1245	Screw (10-32x1), 1,2,3
35-140	Spring, 5,6	1258	Screw (10-32x1-1/4), 1,2
36-51	Shaft, 5	1269	Screw (6-40x1/2), 1
36-153	Dowel, 5	1293	Screw (4-40x1/8), 5
103-27	Washer, 4	2191	Lock Washer, 1,2,3,4,5
123-37	Spring Post, 3	2199	Nut (7/16-32 Hex.), 4
138-22	Screw Driver, 7	2201	Nut (5/16-32 Hex.), 4
138-28	7/16 Socket Wrench, 7	2449	Lock Washer, 1,2
138-36	3/16-1/4 Open Wrench, 7	2666	Lock Nut (3/16-40), 5
138-43	.002 Gauge, 7	2669	Lock Washer, 1,2,3,4,5
138-44	.004 Gauge, 7	2718	Retainer Plate, 1
138-55	8 Oz. Scale, 7	2802	3/8-9/16 Open Wrench, 7
138-58	32 Oz. Scale, 7	3208	Clutch Throw-Out Lever, 3
138-125	.010 Gauge, 7	3225	Sleeve, 4
138-126	.020 Gauge, 7	3287	Bushing, 4
138-127	3/8-7/16 Open Wrench, 7	3288	Washer, 4
138-128	5/16 Open Wrench, 7	3339	Nut (9/16-32 Hex.), 4
300-181	Tape Feed Pawl, 5,6	3340	Lock Washer, 4
300-302	Feed Roll, 5	3438	Washer, 1,2
300-303	Feed Roll Bearing, 5	3595	Nut (1/4-32 Hex.), 5
300-312	Detent Bracket, 5	3598	Nut (6-40 Hex.), 2,3,4,5,6
300-314	Detent, 5	3599	Nut (4-40 Hex.), 5
300-319	Lid Holder, 5	3606	Nut (6-40 Hex.), 3,4
300-320	Shaft, 5	3640	Lock Washer, 4
300-322	Latch, 5	3845	Spring, 4
1026	Screw (6-40x3/8), 1,2,4	4702	Spring, 5
1030	Screw (6-40 Shoulder), 2	4809	Wick, 3

4813	Wick, 3	72468	Spring, 4
4838	3/8-7/16 Open Wrench, 7	72508	Screw (6-40x3/8), 4
4840	5/8-3/4 Open Wrench, 7	72521	Wick, 4
4841	12 Lb. Scale, 7	72764	Roller, 3
4873	.015 Gauge, 7	72954	Tape Guide, 5
4874	.030 Gauge, 7	72973	Lid Plate, 5
5446	Screw (6-40x9/16), 4	72974	Retaining Lid, 5
6097	Spring, 4	73018	Oil Cup, 1
6745	Screw (10-32x1/2), 1,2,4	73520	Wick, 2
6746	Screw (6-40x5/16), 1,3,4,5	74016	Post, 1,2
6807	Screw (6-40x3/16 Headless), 5	74036	Nut (10-32 Hex.), 3
6810	Screw (10-32x3/8), 1,2	74059	Screw (6-40x7/32), 5
6811	Screw (6-40x5/8), 1,2,3,5,6	74399	Screw (6-40 Pilot), 3
6814	Screw (6-40 Pilot), 3,4	74514	Screw (4-40x1/4), 5
7002	Washer, 1,3,4,5,6	74692	Spring Post, 4
7824	Wick, 4	74708	Spring, 4
8185	Screw (1/4-20x3/4), 1,2	74756	Oil Wick, 2
8330	Washer, 4,5	74805	Screw (10-32x3/4), 1,5
8491	Wearing Strip, 5	74962	Spring, 3,5,6
8539	Screw (6-40x1/2), 4,5	74975	Screw (10-32x1/2), 1
8543	Screw (6-40x1/4), 1,2,5	74986	Screw (6-40x13/32), 4,5,6
9922	Oiler, 4	75503	Spring Hook - Push, 7
26492	Spacer, 4	75765	Spring Hook - Pull, 7
31122	Extension, 4	75805	.008-.020 Wire Gauge, 7
33038	Spring, 5	75806	.010-.040 Wire Gauge, 7
33828	Spring, 3	75807	.015-.045 Wire Gauge, 7
34432	Washer, 1,2,3,4,5	76037	Bushing, 4
36463	Spring, 4	76038	Spacer, 4
41974	Spring, 3	76058	Spring Post, 3,5
49345	Spring, 1,2	76249	Screw (6-40x1/8), 3
49420	Spring, 1,2,5	76286	.030 Wire Gauge, 7
49653	Screw (10-32x13/16), 4	76376	Screw (6-40x5/16 Adjusting), 1,2
62145	Screw (14-20x1-3/8), 1,2	76751	Post, 2
70388	Spring, 4	76821	Screw (6-40 Shoulder), 3
71555	Retaining Lid (Assem.), 5	77121	Top Plate (with Wearing Strip), 5
71564	.006 Gauge, 7	77122	Top Plate, 5
71565	.040 Gauge, 7	77140	Nut (9/16-32), 4
71566	.050 Gauge, 7	78044	Spring Post, 3
71567	.060 Gauge, 7	78301	Screw (10-32x5/8), 1
72069	Shim, 5	78741	Spring, 3
72137	Shim, 5	79561	Eccentric Stop, 1
72139	Screw Plate, 5	80294	Spring Post, 4,5

NUMERICAL INDEX

80342	Screw (6-40x23/64), 5	85419	Selector Clutch Shaft (Assem.), 4
80467	Screw (6-40x11/32), 4,5	85421	Hanger, 1,2
80478	Spring Post, 3	85423	Screw (5/16-18 Pilot), 1,2
80509	Spring Post, 6	85424	Side Cover Plate, 2
80757	Screw (10-32x1/2), 1	85426	Front Cover - Upper, 6
82565	Spring, 5	85427	Front Cover - Lower, 6
85379	Base, 1,5	85428	Tape Reel (with #8543 Screw), 2
85380	Bottom Cover Plate, 2	85429	Tape Reel Bracket (Assem.), 2
85381	Elevator Bell Crank, 3	85430	Cover, 6
85382	Bushing, 3	85431	Bearing (Assem.), 3
85383	Latching Link, 3	85432	Clutch Throw-Out Lever Latch, 3
85384	Bushing, 3	85433	Shaft, 3
85385	Throw-Out Lever Bail Link, 3	85434	Spring Arm, 3
85386	Bushing, 3	85435	Reset Lever, 3
85387	Screw (6-40x3/16 Eccentric Shoulder), 3	85436	Detent Lever (Assem.), 3
85389	Eccentric, 3	85437	Bushing, 3
85390	Latch Bracket, 3	85438	Bearing (Assem.), 3
85391	Clamp Plate, 3	85439	Clutch Throw-Out Lever Bail, 3
85392	Latch, 3	85440	Release Bail, 3
85393	Bushing, 3	85441	Shaft, 4
85394	Elevator Clutch Shaft Bearing (Assem.), 3	85442	Driven Member, 4
85395	Selector Clutch Shaft Bearing (Assem.), 3	85443	Driving Member, 4
85396	Pulley Shaft (Assem.), 1	85444	Gear 34-T, 4
85397	Shim, 1	85445	Tape Feed Cam, 4
85399	Code Bar Link, 6	85446	Selector Lever Bail Cam and Transfer Lever Cam, 4
85400	Retainer, 4	85447	Adjusting Sleeve, 4
85401	Detent Arm, 4	85448	Fulcrum Rod, 1,2
85402	Roller, 4	85449	Nut (7/16-32 Hex.), 4
85403	Extension Shaft (Assem.), 1	85450	Shaft, 4
85405	Detent Housing, 4	85451	Gear 50-T, 4
85406	Detent Plunger, 4	85452	Elevator Cam, 4
85407	Spring, 4	85453	Shaft, 1
85408	Bearing, 4	85454	Pulley, 1
85409	Shaft, 4	85455	Bearing, 1
85410	Handle, 4	85456	Post, 3
85411	Stop, 4	85457	Gear 34-T, 1
85412	Collar, 4	85458	Pinion 5-T, 1
85413	Reset Cam, 4	85459	Shaft, 1
85414	Roller, 4	85460	Gear 20-T, 1
85415	Bushing, 4	85461	Hub, 1
85416	Stop Rail, 1	85462	Collar, 1
85418	Elevator Clutch Shaft (Assem.), 4		

NUMERICAL INDEX

85463	Coupling Sleeve, 1	85528	Yield Lever, 4
85464	Bracket, 1	85529	Screw (10-32 Shoulder), 4
85465	Bearing, 4	85530	Shift Latch, 4
85471	Screw (10-32x1/2), 3	85531	Shoulder Stud, 4
85473	Detent Lever, 3	85532	Shift Bell Crank, 3,4
85475	Spring Post, 1,2	85533	Shift Link, 3,4
85476	Stop Plate, 2	85536	Transmitter Mounting Plate, 6
85477	Bearing, 1,2	85538	Bracket - Front, 5
85478	Spacer, 2	85541	Shaft, 4
85480	Push Bar Lever, 2	85542	"T" Transfer Lever, 4
85482	Spring Bar, 1,2	85543	Stud, 4
85483	Spacer, 1,2	85544	Spacer, 4
85488	Shim, 1,2	85546	Selector Lever Guide, 6
85489	Push Bar Guide, 1,2	85547	Tape Feed Bail, 6
85490	Cam Oiler, 1	85548	Bail Roller Arm, 6
85491	Push Bar Operating Bail, 1	85549	Screw (1/4-32 Pilot), 5,6
85492	Roller, 2	85550	Stud, 6
85493	Upper Push Bar, 1	85551	Selector Lever Bail, 5
85494	Lower Push Bar, 1	85552	Bail Roller Arm, 5
85495	Function Push Bar, 1	85553	Shaft, 5
85496	Push Bar Spring, 1,2	85555	Shaft - Lower, 5
85497	Code Bar, 1	85556	Shaft - Upper, 5
85498	Code Bar, 1	85557	Selector Lever, 5,6
85499	Code Bar, 6	85558	Selector Lever, 5,6
85500	Code Bar, 1	85559	Spacer Washer, 5
85501	Code Bar, 1	85560	Bushing, 5
85502	Code Bar, 1	85561	Nut (1/4-32 Guide), 5
85503	Shift Bar, 6	85562	End Plate - Rear, 6
85504	Spreader Cam, 1	85563	End Plate - Front, 5
85505	Operating Bail Cam - Right, 1	85564	Top Plate Support, 5
85506	Operating Bail Cam - Left, 1	85565	Bearing, 5
85507	Shift Mechanism (Assem.), 4	85566	Bearing, 5
85508	Bearing, 1,2	85574	Support, 2
85510	Roller Arm - Right, 1,2	85575	Bracket, 2
85511	Roller Arm - Left, 1	85576	Pivot, 2
85517	Bell Crank Bearing, 1,2	85739	Pinion 10-T, 4
85518	Fulcrum Rod, 1	85816	Wick, 2
85519	Bell Crank Stop, 2	85820	Floating Lever, 3
85520	Spring Plate, 1	85822	Roller, 4,5,6
85521	Bell Crank, 1,2	85823	Spacer, 2
85526	Mounting Plate, 2,4	85892	Plate, 2
85527	Shift Lever, 4	85893	Post, 2

NUMERICAL INDEX

85894	Spring Post, 2	86600	Code Bar Link (M), 4
85895	Rail Shift Push Bar, 1	86601	Code Bar Link (S), 4
85931	Spring Post, 3	86602	Code Bar Link (M-S), 4
86283	Spring, 5	86603	Delay Code Bar, 1
86300	Set of Tools, 7	86633	Stud, 5
86302	Spring, 5	86720	Spring Post, 5
86333	Screw (3/16-40x7/32), 1	86803	Code Bar Guide, 1,2
86339	Shim, 4	86804	Link Guide, 4
86571	Transmitter Mounting Plate, 1,5	86806	End Plate - Rear, 5
86572	Guide, 5	86807	Screw (4-40 Pilot), 5
86573	Bracket - Rear, 5	86808	Frame Bar, 1,2
86574	Extension, 5	87443	Screw (10-32x15/16), 1,2
86575	Ratchet Bearing, 5	89064	Transfer Bail Arm, 4
86576	Retaining Pawl, 5	89065	Transfer Bail, 4
86577	Delay Feed Lever (with Pawl), 5	89066	Sleeve, 4
86580	Tape Feed Lever, 5	89078	Spring Holder, 4
86582	Ratchet, 5	89079	Spring Holder, 4
86585	Ratchet Shaft, 5	89096	Oil Wick, 1
86586	Push Bail, 5	89896	Oiler, 3,4
86587	Clamp Plate, 5	89897	Nut (10-32 Hex.), 3,4
86588	Stop Post, 5	89954	1/4 Socket Wrench, 7
86589	Timing Hub, 5	89955	5/16 Socket Wrench, 7
86596	Extension, 5	91129	Tape Feed Stop Bail, 4
86597	Bushing, 5	91137	Shift Bar, 1
86598	Stop Arm, 5	91138	Code Bar, 1
86599	Delay Selector Lever, 5		

122 968 *Light Tape stop lever*

122968 Night tape stop lines

