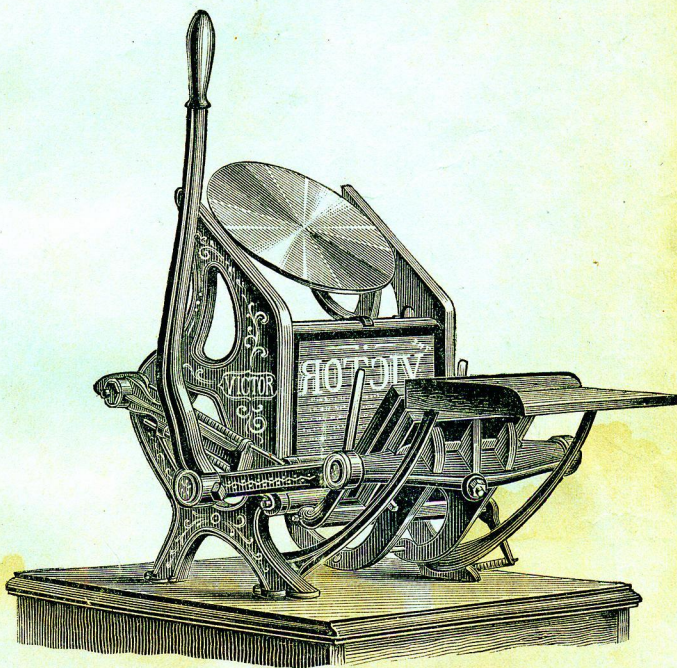


CATALOGUE AND PRICE LIST  
OF  
**Printing Presses, Types**  
AND  
PRINTING MATERIAL,



MANUFACTURED BY  
**J. COOK & COMPANY,**  
No. 21 Main Street,  
**WEST MERIDEN, CONN.**  
**1877.**



# Terms of Payment.

*These goods will be sent by Express, C. O. D., if desired, but as a guarantee of good faith a remittance of one-fourth the amount of the purchase must accompany the order. All expenses of remittance and collection will be charged to the purchaser.*

*If goods are ordered to be sent by Fast Freight, a much cheaper conveyance than Express, a remittance covering the full amount of the purchase must accompany the order.*

*When goods are to be sent by mail, full payment and an amount sufficient to pay return postage on goods, must accompany the order.*

*Remittances should be made by Checks or Drafts on Eastern Cities, by Post Office Money Order, or by Registered Letter—either of which is perfectly safe.*

*Postage Stamps, to any amount, will be taken in payment for goods. Customers often say it is handier for them to remit stamps, and as they are as good as cash to us, we are always willing to take them.*

*Our Prices are very low for first-class goods, and are strictly CASH. We do not give credit to any one, under any circumstances.*

*When ordering, write name and directions for sending goods very distinctly, always giving the names of town, county, and state. When Post Office address is different from Express or Freight office, give both.*

**J. COOK & CO., West Meriden, Conn.**

## GOODS SENT BY MAIL.

*Goods will be sent by Mail when it is so desired, but an amount extra sufficient to prepay postage on the same must accompany the order. The following is the cost, nearly, of sending articles by Mail:*

**Type.**—Pearl to Long Primer, 25 cents per font; Long Primer to Two Line Pica, 50 cents per font; larger than Two Line Pica, 65 cents per font. If amount sent more than pays postage, extra quads and spaces will be sent; if it less than pays, quads and spaces will be deducted.

**Quads and Spaces.**—One-quarter pound, 5 cents; one-half pound, 8 cents; one pound, 15 cents.

**Borders.**—Small fonts, 15 cents; large fonts, 30 cents.

**Corners.**—Set of small corners, 5 cents; set of large corners, 10 cents. Flourishes, 20 cents. Dashes, 2 cents each. Brass Ovals and Circles, 5 cents. Brass Rule, 5 cents per foot. Combination Scrolls, 20 cents.

**Inks.**—Three and six ounce cans, 5 cents; ten ounce cans, 10 cents; one pound cans, 15 cents.

**Rollers.**—Require careful packing. For the three, five and seven inch, 10 cents; for others, 20 cents.

**Type Cases.**—Enterprise Type Cases, 30 cents; all other cases, 40 cents.

**Cards and Paper.**—Cards, per hundred, 5 cents; paper, per quire, 15 cents.

**Miscellaneous.**—Composing Stick, 10 cents; Mallet, 10 cents; Planer, 10 cents; Shooting Stick, 10 cts; Galley, 10 cents; Cherry Reglet, 2 cents per yard; Leads and Metal Furniture, 15 cents per lb; Spring Bodkin, 5 cents; Set of three Webb's Mechanical Quoins, 10 cents. Purchasers can judge of the weight of any articles not mentioned above, and send postage therefor at the rate of 15 cents per pound. Only packages weighing four pounds or less can be sent by mail. Goods sent by mail are at the risk of the purchaser.

All our Presses are strongly built, handsomely finished, and warranted to do perfect work. In no respect are they excelled by any other press in the market, and in many respects they are unequalled. Prices on Presses and all other goods have been placed at low figures, to suit the exigencies of the times.



# CATALOGUE

OF

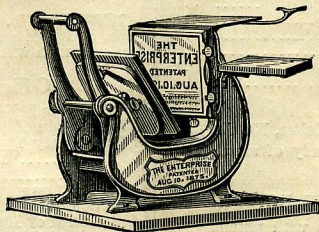
## *Printing Types and Materials,*

WITH ILLUSTRATIONS OF

## PRINTING PRESSES,

MADE BY

*J. Cook & Co., West Meriden, Conn.*



**E**XPERIENCE has demonstrated that the Printing Press is the business man's most efficient helper, and that without its aid no great success is attainable. Thousands of presses are now owned by merchants, manufacturers, and professional men, who do their own printing and advertising; and the time is fast approaching when the use of types will be as general as the use of pens. Not until that time will the art of printing accomplish the full measure of its mighty power for good. With one of our complete outfits a person possesses unlimited facilities for advertising, and the benefits to be derived from the possession of press and types, ready at all times to do one's bidding, are inestimable.

**Manufacturers** will readily see that the printing necessary in a large manufacturing business can be neatly, thoroughly, and satisfactorily done, with none of the ordinary mistakes and annoyance, and hundreds of dollars saved yearly in printers' bills—by using our presses.

**Amateur Printing** is no longer a novelty, but now one of the commonest things in the world. Young and old engage in it, both for pleasure and profit. It never fails of being a healthful and instructive pastime—and as to profit, the press invariably more than pays for itself in a short time. Instances are numerous where amateurs have developed a large and highly remunerative business, and become leading job printers.

**Boys and Girls** are delighted with our presses. They learn rapidly; the work is a constantly increasing pleasure; they earn their own spending money; acquire business habits, and are taught to think for themselves. There is nothing boys enjoy so well as to do nice printing—and no gift is half so acceptable or profitable as a good press. With our outfits a boy can print a great variety of jobs, and it is impossible to estimate the benefit he will derive. The attention of Parents, Guardians, and Teachers is earnestly invited to this means of education and healthful amusement.



# COMPLETE PRINTING OFFICES.

As a guide to those wishing to order printing material, who are yet unfamiliar with the printing business, we have prepared the following list of Offices. Customers can make any change in them desired, and add to or take from prices accordingly. Less quantities than those given will not usually be found satisfactory.

Purchasers can make their own selections of type from our specimens, or state the kind of printing they desire to do, and we will select type to the amount sent.

Any person can make up an order to suit himself, regardless of these offices, if he chooses to do so. We only aim to aid those unacquainted with the subject, in making out their first orders.

## Office No. 1, \$5.00.

No. 1 Enterprise Press, complete.....	\$3.00
One font of type, with quads and spaces.....	.95
Leads.....	.10
One can Black Ink.....	.25
Three-inch Ink Roller, with handle.....	.50
Furniture.....	.20

\$5.00

Same office, with Enterprise Self-Inker, No. 1, 8.00.

Office No. 1 will print perfectly any small work suited to the size of the chase.

## Office No. 2, \$10.50.

No. 2 Enterprise Press, complete, with patent Ink Roller Rest and Chase.....	\$5.50
Two fonts of Type, with quads and spaces.....	3.15
Leads.....	.20
One can Black Ink.....	.25
Three-inch Ink Roller and handle.....	.50
One Type Case.....	.50
Furniture.....	.40

\$10.50

Same office, with Enterprise Self-Inker, No. 2, 15.00.

Office No. 2 will print a variety of small jobs: cards, labels, envelopes, etc.

## Office No. 3, \$19.50.

No. 2 Enterprise Press, complete with patent Ink Roller Rest, and Chase.....	\$5.50
Stand, with drawer and treadle.....	3.00
Three fonts of Type, with quads and spaces.....	5.65
Leads, 30c; Furniture, 40c.....	.70
Can Black Ink.....	.35
Three-inch Ink Roller and handle.....	.50
Two Enterprise Type Cases.....	1.00
Three Steel Gauge Pins.....	.20
Eight-inch Composing Stick.....	1.50
Hard wood Mallet, 25c; planer, 25c.....	.50
Bodkin and Tweezers combined.....	.35
Benzine, for cleaning type.....	.25

\$19.50

Some office, with Enterprise Self-Inker, No. 2, 24.00.

Office No. 3 is adapted to a line of jobs similar to No. 2, but in greater variety. It will be found a cheap and very satisfactory outfit.

## Office No. 4, \$32.00.

No. 3 Enterprise Press, complete with patent Ink Roller Rest, Card Table, and Chase.....	\$15.00
Stand, with drawer and treadle.....	3.00
2 fonts plain Type, { with quads and spaces.....	7.20
2 fonts fancy Type, {	
Leads, 40c; Furniture, 85c.....	1.25
Can Black Ink.....	.65
Five-inch Ink Roller and Handle.....	.60
Three Enterprise Type Cases.....	1.50
Three Steel Gauge Pins.....	.20
Eight-inch Composing Stick.....	1.50
Hard wood Mallet, 25c; planer, 25c.....	.50
Bodkin and Tweezers combined.....	.35
Benzine, for cleaning type.....	.25

\$32.00

This office is capable of a wide range of work, miscellaneous printing, advertising, etc. Will print the largest size letter-heads, bill-heads and statements, and a good sized handbill.

## Office No. 5, \$45.00.

No. 4 Enterprise Press, complete with patent Ink Roller Rest, Card Table and Chase.....	\$20.00
Stand, with drawer and treadle.....	3.00
4 fonts plain Type, { with quads and spaces.....	12.20
3 fonts fancy Type, {	
Leads, 70c; Furniture, \$1.20.....	1.90
Can Black Ink.....	.65
Seven-inch Ink Roller and handle.....	.70
Five Enterprise Type Cases.....	2.50
Three Steel Gauge Pins.....	.20
Ten-inch Composing Stick.....	1.75
Hard wood Mallet, 25c; planer, 25c.....	.50
Bodkin and Tweezers combined.....	.35
Assortment of Brass Rules and Dashes.....	1.00
Benzine, for cleaning type.....	.25

\$45.00

Office No. 5 is adapted to a great variety of jobs, and well suited to job printers, amateurs, and business men who wish to advertise thoroughly.

## Office No. 6, \$50.00.

No. 2 Victor Self-Inking Press, with rollers....	\$30.00
3 fonts plain Type, { with quads and spaces..	10.60
3 fonts fancy Type, {	
Leads.....	.60
Furniture.....	.75
Four Printers regular and Job Type Cases.....	3.00
Ten-inch Composing Stick.....	1.75
Assortment of Rules, Dashes and Cuts.....	1.35
Three Steel Gauge Pins.....	.20
Hard wood Mallet.....	.25
Planer.....	.25
Bodkin and Tweezers combined.....	.35
Can Black Ink.....	.65
Benzine, for cleaning type.....	.25

\$50.00

With office No. 6 any ordinary work can be done. A printing business that will pay largely can be established, extensive advertising done, etc. An outfit so complete and satisfactory was never before offered for anything like the same price.

## Office No. 7, \$75.00.

No. 2 Victor Self-Inking Press, with rollers....	\$30.00
Twelve fonts plain and fancy Type, with quads and spaces.....	20.00
Twelve Job Cases, with handsome Cabinet.....	15.00
Leads.....	.80
Furniture.....	.80
Assortment of Rules and Dashes.....	1.00
Mercantile cuts—To, Dr., Office of, Bought of.....	.90
Ten-inch Composing Stick.....	1.75
Two Job Gallies.....	1.00
Imposing Stone.....	1.25
Hard wood Mallet.....	.25
Planer.....	.25
Bodkin and Tweezers combined.....	.35
Can Black Ink.....	.65
Can Red Ink.....	.75
Benzine, for cleaning type.....	.25

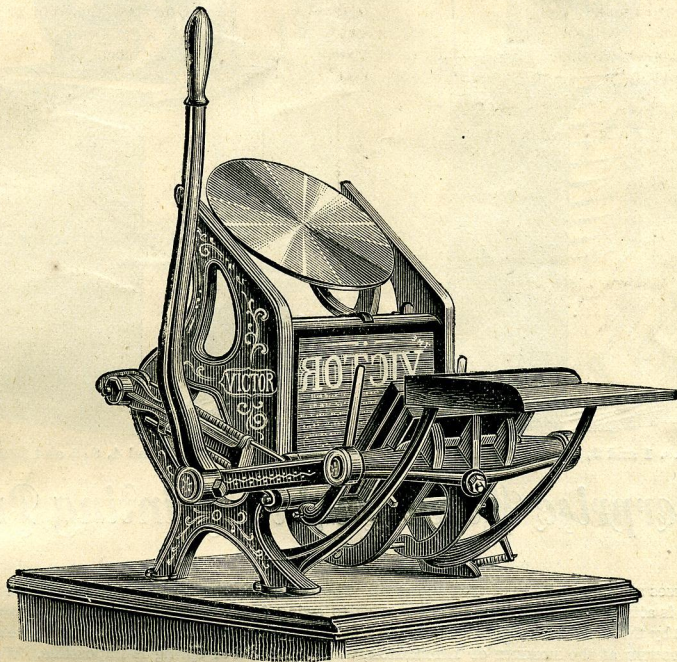
\$75.00

This is just the office with which to establish an extensive jobbing business. With it a person can do the printing for a large community, and in cities can successfully compete with others in the business. It is also suited to the wants of manufacturers or business men who have large quantities of printing to do, or those who advertise extensively.

In the above Offices any Press can be substituted for the one named by Paying Difference in Price.



# THE UNRIVALLED VICTOR PRINTING PRESSES.



## WARRANTED TO DO PERFECT WORK!

THE above engraving fairly represents our new VICTOR PRINTING PRESS. Recognizing the existing demand for a serviceable, self-inking machine,—one capable of doing all ordinary commercial printing, and yet one which can be sold at a moderate price, we have added the Victor to the series of presses heretofore made by us. It is excelled in no respect by any other press of its size in the market, and has many points of excellence not claimed by any of its competitors. The following are among its distinguishing features:

FIRST.—It is simple and exceedingly strong in construction, cannot spring in any of its parts, is not liable to get out of order, and with proper care will last a life-time.

SECOND.—It can be worked with great ease, requiring little strength on the part of the operator, as by the device used power accumulates immensely at the moment of impression. The lever handle is within easy reach of the operator, requiring no long stretch of the arm to grasp it, as do other presses using a side lever. This great advantage will be appreciated by those who have experienced the weariness caused by a constant reaching after any object. The lever can be used on either side of the press, as may be desired.

THIRD.—It has perfect ink distribution, two rollers passing twice completely over the form and twice over a revolving ink disc, at each impression. The rollers are controlled by a motion which insures their slow and uniform passage over the face of the type, a desideratum highly essential to good printing, as a jump over the type by the rollers is destructive of decent presswork. In its inking apparatus the Victor is unequalled.

FOURTH.—Its self-acting gripping fingers, which hold the sheet in place and remove it from the type when printed, can be instantly removed when cards are to be worked, in printing which grippers are only in the way.

FIFTH.—It has perfect register, and will therefore print in colors as well as any press made.

SIXTH.—The impression is regulated by four screws acting on the platen—the only correct method.

SEVENTH.—The opening between the bed and platen is greater than in most other presses, giving plenty of room for making ready the form, and feeding the sheets.

EIGHTH.—The press is handsomely finished and painted, making it an ornament to any room or office.

NINTH.—It is large enough to do all ordinary printing for the counting-house, the store, or the manufactory.

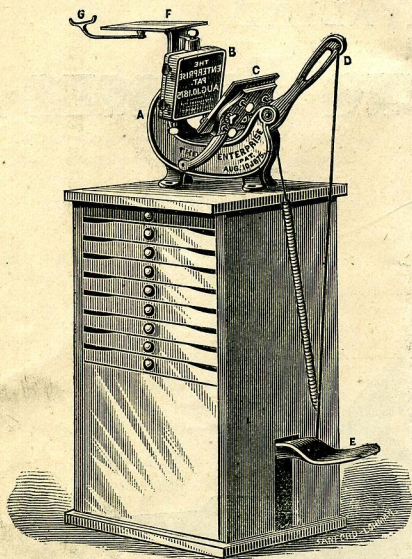
TENTH.—**Its Cost is much less than that of any other Press of equal Merit.**

*No. 2, Size of Chase inside, 6x9 inches, Price, \$30.00*

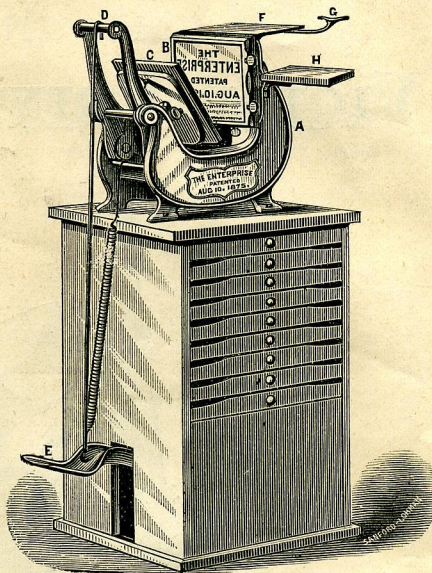
**INCLUDING FEED BOARD, CHASE, WRENCH, TWO MACHINE ROLLERS, ONE HAND ROLLER.**

PRICES OF EXTRAS.—Extra chase, 60 cents; extra rollers, with stocks, 70 cents each; extra stocks, 35 cents. When new rollers are required, old ones can be returned and stocks will be re-covered for 35 cts. each.





Nos. 1 and 2, \$8 and \$5.50.



Nos. 3 and 4, \$15 and \$20.

## Enterprise Hand-Inking Printing Press.

THE Presses are made wholly of iron and steel. The frame, A, is cast solid with the bed, B. An auxiliary platen is attached to the frame by arms so as to swing freely back and forth, and is moved in Presses Nos. 1 and 2 by the action of a single lever, D; in Nos. 3 and 4 by a double lever, D. These are so made as to give GREAT POWER at the MOMENT OF IMPRESSION, while any twist or spring is impossible. We have used a single lever in the small presses, because careful trial proves that plan to be the BEST. A double lever adds to the weight without being of the slightest benefit. These levers can be worked by hand or foot, as desired. The principal platen, C, on which rests the sheet to be printed, is fastened to the auxiliary platen by a thumb screw. It swings back far enough to allow PLENTY OF ROOM for inking the type. The chase rests on a bevel, and can be fastened or removed in an instant by the quarter turn of a screw. It is made with a bottom, and has screws in one side and one end—great conveniences for amateurs, as large forms can be set and locked with ease, without any liability of piling the type. The press is adjusted in front, by four fine screws through the platen,—a plan giving great superiority over other presses, as the finest adjustment is quickly made, and when once made little change is required. Side arms are dispensed with, so that a sheet of any size or with any margin can be readily printed on the ENTERPRISE. The ink-table, F, can be instantly detached for cleaning. It is made with a rest, G, for the handle of the ink roller, attached to a stud beneath, which can be turned under the ink table when not in use; when turned up the handle of the roller is kept entirely clear of the ink. Other devices do not accomplish this. All pivots are of steel, making the press work very smoothly, and the whole press is so simply and strongly made, and so easily adjusted, that amateurs are sure of a perfect impression, even in the finest work. Presses are furnished with or without stand and treadle, as may be desired. The treadles are a great advantage, giving easier and quicker work. They are so constructed as to be instantly detached if desired. The stand is furnished with a drawer, and will hold eight Enterprise type cases, making a cheap and convenient cabinet. The card table, H, can be removed in an instant, for packing or any purpose.

**Enterprise Press No. 1.**—Size of chase, inside,  $2\frac{1}{2}$  by 4 inches. Prints a form  $2\frac{1}{4}$  by  $3\frac{3}{4}$  inches. Weighs, boxed, 15 lbs. Price,—\$3.00

**Enterprise Press No. 2.**—Size of chase, inside,  $3\frac{1}{4}$  by  $5\frac{1}{2}$  inches. Prints a form 3 by  $5\frac{1}{4}$  inches. Weighs, boxed, 26 lbs. Price,—\$5.50

**Enterprise Press No. 3.**—Size of chase, inside, 6 by  $8\frac{1}{2}$  inches. Prints a form  $5\frac{1}{2}$  by 8 inches. Weighs, boxed, 90 lbs. Price,—\$15.00

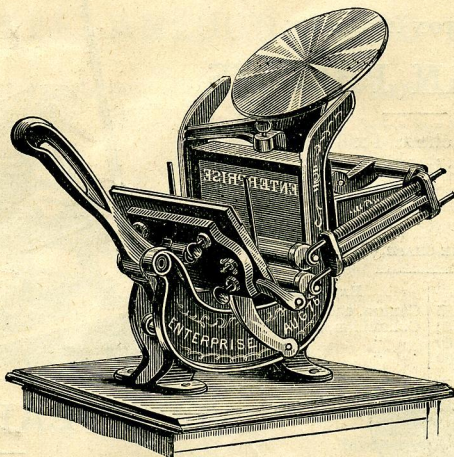
**Enterprise Press No. 4.**—Size of chase, inside, 7 by  $10\frac{1}{2}$  inches. Prints a form  $6\frac{1}{2}$  by 10 inches. Weighs, boxed, 125 lbs. Price,—\$20.00

**Stand, Treadle and Spring, for Foot Power, either Press, \$3 Extra.**



THE AMATEUR'S FAVORITE!

CARD PRINTERS DELIGHTED!



## Enterprise Self-Inking Printing Press.

THE established superiority of the ENTERPRISE Hand-Inking Presses, their ready sale, and the satisfaction universally given by them, induced us to believe that the same machine with a self-inking attachment would meet with general favor. We have not been disappointed in that expectation. The **Enterprise Self-Inkers**, represented above, receive the highest commendations from those who have seen or used them, and are generally acknowledged to be the best small presses made. They are constructed in the same substantial manner that characterizes the Hand-Inkers, being, in fact, the same press, with the addition of machine worked rollers. With the self-inking attachment perfect distribution of ink is obtained, but the chief advantage gained is the much greater rate of speed at which the press can be worked. When treadle and spring are used, speed is only limited by the dexterity of the operator in feeding, and without treadle, one thousand impressions per hour can be easily worked. Card printers will find these presses exactly suited to their wants. We feel warranted in asserting that **for Card and other small work the Enterprise Self-Inkers are unequaled.** A fair trial will convince one of their excellence.

If, for any cause, or at any time, it should be desired to change these presses, temporarily, to Hand-Inkers, it can be readily done by removing the self-inking attachment, and putting on a square ink plate. Thus at simply the expense of an extra ink plate the purchaser has both a hand and self-inking machine.

Each press is provided with chase and two machine rollers, being in perfect working order when shipped. The No. 1 Self-inking ENTERPRISE, being designed more especially for card printing, has no grippers, as they are not needed when cards are worked. No. 2 Self-Inking ENTERPRISE complete with grippers.

### CHASES FOR ALL ENTERPRISE PRESSES ARE MADE WITH A BOTTOM.

**Enterprise Self-Inking Press, No. 1.**—Size of chase, inside,  $2\frac{1}{2}$  by 4 inches.—Prints a form  $2\frac{1}{4}$  by  $3\frac{3}{4}$  inches. Weighs, boxed, 20 lbs. Price,—**\$6.00**

**Enterprise Self-Inking Press, No. 2.**—Size of chase, inside,  $3\frac{1}{4}$  by  $5\frac{1}{2}$  inches.—Prints a form 3 by  $5\frac{1}{4}$  inches. Weighs, boxed, 35 lbs. Price,—**\$10.00**

**Stand, Treadle and Spring, for Foot Power, either Press, \$3 Extra.**

### PRICES FOR EXTRAS.

Extra Chase for No. 1 Press.....	\$0.80
" " " 2 ".....	1.00
" " " 3 ".....	1.65
" " " 4 ".....	2.50

#### FURNITURE FOR HAND OR SELF INKERS.

No. 1 Press.....	\$0.20
No. 2 ".....	.40
No. 3 ".....	.85
No. 4 ".....	1.20

#### EXTRA INK TABLES FOR HAND-INKERS.

No. 1 Press.....	\$0.25
No. 2 " with rest.....	.40
No. 3 " ".....	.70
No. 4 " ".....	1.25

#### EXTRA INK DISCS FOR SELF-INKERS.

No. 1 Press.....	\$0.80
No. 2 ".....	1.00

#### EXTRA INK ROLLERS FOR SELF-INKERS.

No. 1 Press, with cores, each.....	\$0.40
No. 2 " ".....	.50

When new rollers are required, old ones can be returned and stocks will be re-covered for 25 cts. each.

#### HAND INKING ROLLERS.

Three Inch Roller, without Handle.....	\$0.25
Five " " " ".....	.35
Seven " " " ".....	.45
Improved Handles for Rollers.....	.25

Our Ink Rollers are made of **Patent Composition**, and will not dry up. Prices for rollers are not repeated in Miscellaneous Price List. Purchasers can order from above scale.

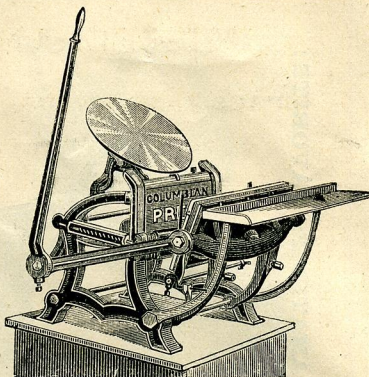


## THE CAXTON AND THE COLUMBIAN PRESSES.

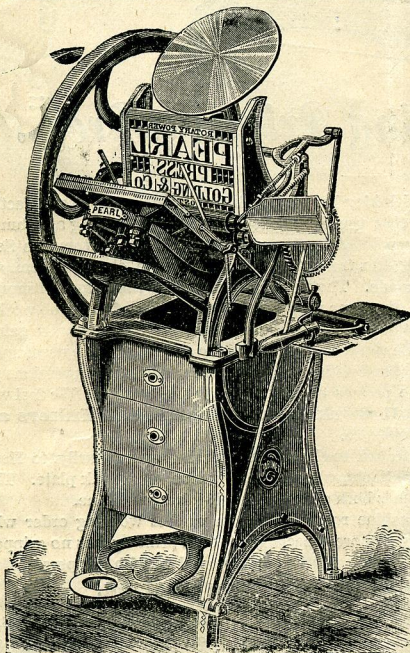
Caxton, size inside of chase, 4 x 6 inches,	\$14.00
Columbian, No. 1, size inside chase, 5x7½,	27.00
Columbian, No. 2, " " " 6x9,	37.00
Columbian, No. 3, " " " 8x12,	60.00

TWO ROLLERS AND ONE CHASE WITH EACH PRESS.

EXTRA CHASES.		Extra Rollers.	
Caxton.....	\$0.35	Caxton, each.....	\$0.50
Columbian, No. 1.....	.50	Columbian, No. 1, each,	.60
" " 2.....	.60	" " 2, " "	.70
" " 3.....	.90	" " 3, " "	.95



Cut representing Rotary Power Pearl Press with Iron Cabinet



## THE PEARL PRESS.

No. 1,	5x7 inches	Lever Power,	\$35.00
	Inside chase,	Rotary Power,	65.00
		Steam Power,	70.00
		With Iron Cabinet, \$12 extra.	
No. 2,	6x9 inches	Lever Power,	45.00
	Inside chase,		
No. 3,	7x11 inches	Lever Power,	65.00
	Inside chase,	Rotary Power,	110.00
		Steam Power,	125.00
		With Iron Cabinet, \$12 extra.	

### GOLDING'S JOBBER.

No. 7,	10x15 inches	Rotary Power,	250.00
	Inside chase,	Steam Power,	275.00
		With Impression Throw-off, \$25 extra.	
No. 8,	12x18 inches	Rotary Power,	350.00
	Inside chase,	Steam Power,	365.00
		With Impression Throw-off, \$25 extra.	

Machine rollers, hand-roller, ink-board, delivery board, chase, wrench and screws, are included with every press.

### PRICES FOR EXTRAS.

	No. 1.	No. 2.	No. 3.
Chase.....	\$ 0.65	\$ 0.75	\$ 0.95
Spider Chase.....	1.00	1.25	1.50
Rollers, each.....	.75	.90	1.00
Roller Cores, each.....	.40	.50	.60
Roller Mold.....	2.00	2.50	3.00

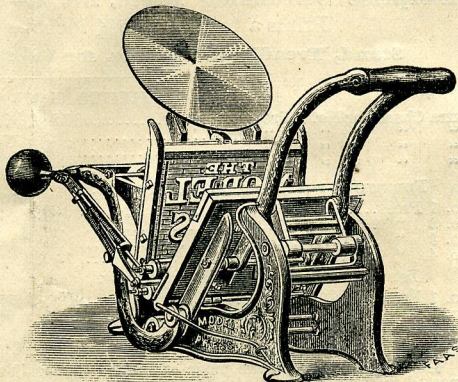
## THE MODEL PRESS.

Chase, inside.			
No. 0,	3¼x5½	Hand-Inking,	\$ 6.00
	Inches,	Self-Inking,	13.00
No. 1,	5x7½	Hand-Inking,	10.00
	Inches,	Self-Inking,	22.00
No. 2,	6x9	Hand-Inking,	18.00
	Inches,	Self-Inking,	35.00

Hand-Inking presses include chase, ink-table, and key-wrench.

Self-Inking presses complete with ink rollers.

**Extras.**—Chase for No. 0 Press, 50 cents; No. 1 Press, 75 cts; No. 2 Press, \$1.00. Ink Rollers, each, No. 0 Press, 50 cents; No. 1 Press, 65 cents; No. 2 Press, 75 cents. Hand Rollers, three inch, 50 cents; five inch, 60 cents; seven inch, 70 cents—including handles.





# MISCELLANEOUS PRICE LIST.

## SPACES AND QUADS.

	1-4 lb.	1-2 lb.	1 lb.
Pearl.....	\$0.45	\$0.80	\$1.50
Nonpareil.....	.35	.45	.75
Brevier.....	.20	.35	.65
Long Primer, (two line Pearl,).....	.30	.35	.55
Pica, (two line Nonpareil,).....	.20	.30	.55
English.....	.20	.30	.50
Great Primer.....	.30	.30	.50
Two Line Long Primer.....	.30	.30	.50
Two Line Small Pica.....	.30	.30	.50
Two Line Pica.....	.30	.30	.50
Two Line English.....	.30	.30	.50
Two Line Great Primer.....	.30	.30	.50
Four Line Pica.....	.30	.30	.50

Figures and Leaders at same Prices.

Mallet, hard wood.....	\$ .25
Planer.....	.25
Shooting Stick, wood.....	.10
Shooting Stick, iron.....	.25
Wooden Mitre Box.....	.50
Saw.....	1.50
Ley Brushes, 25 cents to.....	1.00
Concentrated Ley, one lb. can.....	.25
Benzine, per pint.....	.25
Galley, black walnut, six inches square.....	.40
Galley, black walnut, 8 by 12 inches.....	.60
Roller Composition, per lb.....	.25
Ornamental Flourishes, per font.....	3.00
Brass Flourishes, per font.....	4.50

## Leads and Furniture.

Leads, 6 to Pica, per lb.....	\$ .20
Labor Saving Metal Furniture, per lb.....	.35
Pine Reglet, per dozen yards, assorted sizes.....	.25
Cherry Reglet, Nonpareil to Pica, per yd.....	.04
Cherry Reglet, 2 to 8 Line Pica, per yd.....	.06
Cherry Reglet, Beveled, for side sticks, per yard.....	.07
Hickory Quoins, per dozen, 8 cts.; per 100.....	.50



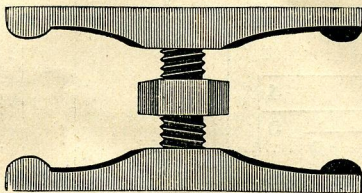
## Patent Spring Bodkin.

An indispensable article in an office. Price, 35 cents.



## Gauge Pins.

Megill's Steel Gauge Pins, for feeding cards and paper, and removing cards from type—3 for 20c; 6 for 40c; 12 for 75c. Directions for using sent with each order.



## Webb's Mechanical Quoins.

Set of 15 Quoins with Wrench.....	\$3.00
Quoins, each.....	.20
Wrenches, each.....	.10

The Quoins are just the things for small presses, where but little room can be used in locking forms. They have a lateral spread of from one-half to three-quarters of an inch, and with them nothing but straight furniture is used.

**The American Printer.**—A book that every Amateur should have. \$1.50; by mail, \$1.65.

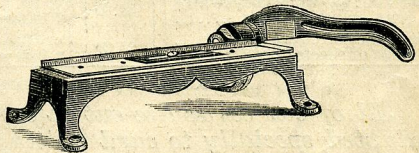
## PRINTING INKS.

Black, quick drying fine job ink, well adapted for use with portable presses, 6 oz. can.....	\$0.35
Same quality, 10 oz. can.....	.60
Black, extra quality for fine work, 6 oz. can.....	.75
Black, cheap quality, for newspapers, labels, hand-bills, etc., 1 lb. can.....	.35
Same quality in 5 lb. can, or more, per lb.....	.25
Red, good quality, 6 oz. can.....	.75
Red, Purple or Lake, extra quality, 3 oz. can.....	1.25
Fine Light and Dark Blue, Green or Brown, 6 oz. can.....	.80
White and Yellow, 3 oz. can.....	.35
Tint Inks, all shades, 6 oz. can.....	.80
Size, used instead of ink when printing with bronze powders, 6 oz. can.....	.75
Size, same quality, 3 oz. can.....	.40
Printers' Quick Drying Reducing Preparation, for reducing the strength of ink when too thick and heavy, 6 oz. can.....	.30

## BRONZE POWDERS.

### For Printing in Gold and Silver.

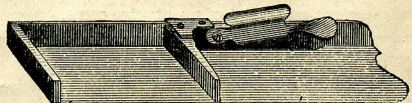
Gold Bronze, for cheap work, 1 oz.....	\$0.25
Gold Bronze, fine, 1 oz.....	.50
Gold Bronze, very fine, 1 oz.....	.75
Silver Bronze, 1 oz.....	.50
Copper Bronze, for printing in Copper, 1 oz.....	.50



## Lead Cutter.

Warranted to cut Leads evenly and smoothly. Every printer should have this convenient machine.

Price Reduced to \$2.00.



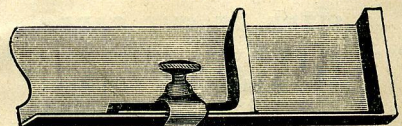
## Grover Composing Stick.

6 inch.....	\$1.25	12 inch.....	\$2.00
8 ".....	1.50	15 ".....	2.50
10 ".....	1.75	18 ".....	3.00



## Screw Composing Stick.

6 inch.....	\$.85	12 inch.....	\$1.25
8 ".....	.95	15 ".....	1.50
10 ".....	1.10	18 ".....	1.75



## Yankee Composing Stick.

6 inch.....	\$1.25	12 inch.....	\$2.00
8 ".....	1.50	15 ".....	2.50
10 ".....	1.75	18 ".....	3.00



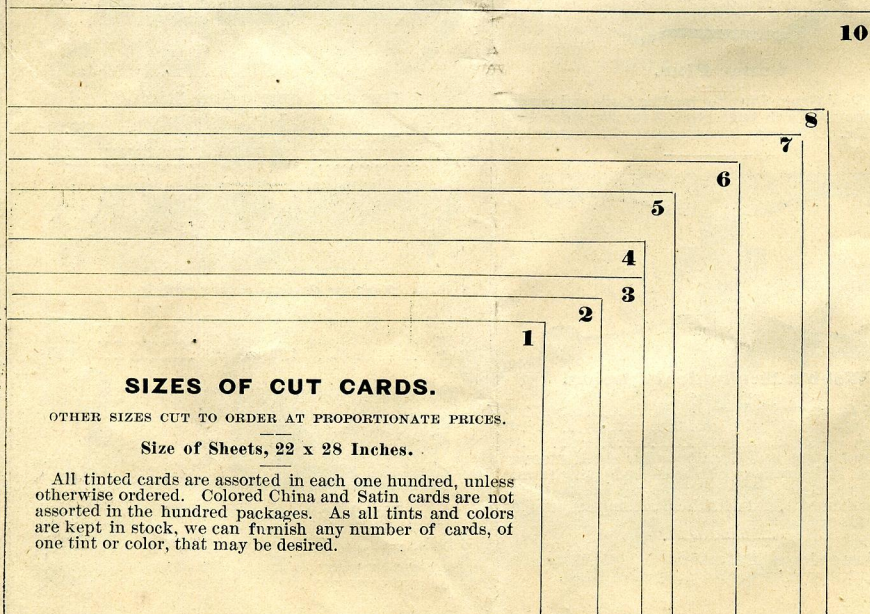
# PRICE LIST OF CARDS.

STOCK.	Per 100 Sheets.	Sizes, 1	2	3	4	5	6	7	8	10
Best China, White.....	\$4.50	Per 100	\$0.06	\$0.08	\$0.10	\$0.10	\$0.12	\$0.12	\$0.15	\$0.18
Best China, Colored.....		" 1000	.38	.50	.65	.70	.80	.90	1.10	1.35
Satin, Extra Heavy, White....	6.50	Per 100	.08	.10	.12	.12	.15	.15	.20	.25
Satin, Extra Heavy, Colored....		" 1000	.55	.65	.80	.90	1.05	1.30	1.50	2.00
Extra Fine Blanks.....										
Cheap Blanks.....	4.00	Per 100	.05	.07	.08	.08	.10	.12	.12	.15
		" 1000	.35	.45	.55	.60	.65	.80	1.00	1.25
Fine Blanks.....	6.00	Per 100	.08	.10	.10	.12	.12	.15	.20	.25
		" 1000	.50	.60	.75	.85	.95	1.20	1.40	1.90
Mercantile Bristol, a fine white for nice business cards, etc....	5.00	Per 100	.07	.08	.10	.10	.12	.12	.15	.20
		" 1000	.45	.55	.65	.75	.85	1.00	1.20	1.45
Extra White Bristol, fine and heavy, for nice work.....	7.50	Per 100	.10	.12	.12	.15	.15	.20	.25	.30
		" 1000	.70	.85	1.00	1.10	1.25	1.50	1.80	2.60
Fine Tinted Bristol, nine tints, Extra Fine and Heavy.....	8.00	Per 100	.10	.12	.15	.15	.18	.20	.25	.30
		" 1000	.75	.90	1.10	1.20	1.35	1.60	2.00	2.80
Granite Bristol, assorted tints,										
Repp, all the popular tints.....	10.50	Per 100	.12	.15	.18	.20	.25	.30	.35	.40
		" 1000	.90	1.15	1.35	1.50	1.75	2.25	2.75	3.25
Damask, assorted tints.....										
Double Repp, assorted tints....	11.50	Per 100	.12	.15	.20	.25	.25	.35	.35	.45
		" 1000	.95	1.20	1.45	1.65	1.85	2.35	2.80	3.50
Double Damask, assorted tints New cards, and very stylish....										
Plaid Bristol,—assorted tints, and of excellent stock.....	11.00	Per 100	.12	.15	.18	.20	.25	.30	.35	.40
		" 1000	.90	1.15	1.40	1.60	1.80	2.30	2.85	3.00
Double Enameled,—white and tinted.....	20.00	Per 100	.25	.30	.35	.45	.50	.55	.65	.75
		" 1000	1.85	2.25	2.75	3.20	3.50	4.50	5.50	6.50
Marbled, assorted tints.....										
Snowflake,—white and assorted tints—superior stock.....	30.00	Per 100	.30	.35	.40	.50	.55	.65		
		" 1000	2.50	2.90	3.50	3.90	4.60	5.50		
Gelatine, or Glass, five tints... (Size of sheets, 18 x 22 inches)	20.00	Per 100	.40	.45	.50	.55	.65			
		" 1000	3.00	3.65	4.25	4.60	5.60			

## CARDS BY MAIL, 5 CENTS PER HUNDRED EXTRA.

*All of our cards are cut in our own establishment, with machinery adapted specially to card cutting, and as none but the best stock is used, we are confident of giving perfect satisfaction to those who may favor us with their orders. Our prices, the sizes and quality of cards considered, have been placed at the lowest possible figures.*

**Sample Packages.**—Sample of all plain and fancy cards, chromos, picture and flag cards, etc., with card case, sent on receipt of twenty-five cents. Samples of paper, envelopes, tags, etc., ten cents.



Six PLY Railroad.—An extra heavy and tough card, for printing tickets, checks, and such other jobs as require durable stock. Four colors—Red, Blue, Green, Yellow. Same prices as Double Repp.



## OUR CARD SPECIALTIES.

- Floral Chromo Cards.**—A set of five new designs on black ground with white panel. All printed and cut so accurately that they will register perfectly to one form and gauge. Size No. 4. Price, 50 cents per 100; \$4.00 per 1000. Assorted in all cases. For beauty of design, and richness and brilliancy of color, these cards are unequalled. Their immense sale makes it possible for us to offer them at extremely low prices.
- Centennial Chromos.**—These cards are similar to the Floral Chromos, but have longer panels for printing name or advertizement. Size No. 4. Per 100, 50c; per 1000, \$4.00
- National Flag Cards.**—A set of six National Flags, with neutral tint ground, and white panel large enough to afford ample room for printing and advertisement. The Flags are United States, Great Britain, Germany, France, Russia, Brazil. These cards are highly appreciated by the trade generally. Price, per 100, 65 cents; per 1000, \$5.00.
- Pictorial Cards.**—Lithographic photo's of our most noted singers and actresses, with space for printing. Twenty-four portraits. Assorted, per 100, 35c; per 1000, \$3.00.
- Portraits of Eminent Men.**—Lithographic portraits of the eighteen Presidents, and six eminent men, with space for printing. Assorted, per 100, 40c; per 1000, \$3.00.
- Comic Picture Cards.**—Lithographed. Twenty-four new and original designs—caricatures of popular songs—with space for printing. Per 100, 40c; per 1000, \$3.00.
- Transparent Cards.**—Revealing a picture when held up to the light. Twenty-four designs. These are among our most taking novelties. Per 100, 40c; per 1000, \$3.00.
- Gold Edged Cards.**—These are very rich in style and finish, and make an elegant visiting or address card. Price, per 100, 50 cents; per 1000, \$4.00.
- Mourning Cards.**—Fine Bristol cards with black border, leaving center blank for printing. About size of No. 4. Price, 40 cents for 50; 70 cents for 100; \$3.00 for 500.
- Card Cases.**—Handsome Pocket Cases, designed to hold fifty visiting or business cards, any size up to No. 4. Price, 10 cents each; 3 for 25c; 20 for \$1.00. A card case containing fifty elegant visiting cards, no two alike, sent postpaid for 35 cents.
- Moire Antique.**—These cards are cut from imported stock, and are very handsome. One beautiful tint, Lavendar. Prices same as Gelatine.
- Jet Damask, JET MOIRE ANTIQUE, AND JET BRISTOL.**—Specially adapted for printing in gold and silver. Something new and stylish. Assorted, No. 3, 30 cents per 100; \$4.50 per 1000. Other sizes cut to order. [Send for samples of all our cards.]
- Egyptian Marble.**—This card is among the latest novelties, and is decidedly attractive. Five shades. No. 3, 30 cts. per 100; \$2.50 per 1000. Other sizes cut to order.
- Italian Stone.**—This card is also one of the latest novelties, and destined to become very popular. Five shades. No. 3, 30 cts. per 100; 1000, \$2.50. Other sizes to order.
- Scroll Cards.**—Beautifully ornamented. Assorted designs in each package. Price, 30 cents per 100; \$2.50 per 1000. [Send twenty-five cents for full line of card samples.]

### PAPER.

Letter Heads, commercial note size, ruled, wide heads for printing, half sheets, per ream, (480 sheets) 80 cents; half ream, 45 cents.

Letter Heads, Congress, letter size, ruled, wide heads for printing, half sheets, per ream, (480 sheets,) \$1.60; half ream, 90 cents.

Bill Heads, sixes, 6 lines for writing, wide heads for printing, per ream, (500 sheets,) 65 cents; half ream, 40 cents. Tinted, 20 cents per ream extra.

Bill Heads, fours, 14 lines for writing, wide heads for printing, per ream, (500 sheets,) \$1.00; half ream, 60 cents. Tinted, 30 cents per ream extra.

Bill Heads, twos, 78 lines for writing, ruled on both sides, wide heads for printing, per ream, \$2.00; half ream, \$1.10. Tinted, 40 cents per ream extra.

Statements, used by many for bill heads, per ream, 80 cents; half ream, 45 cents.

Short Statements, 12 lines for writing, per ream, 50c.

White paper, for handbills, etc., size 19 by 24, per ream, 480 sheets, \$2.00; per quire, 24 sheets, 12 cts.

White paper, fine quality, size 19 by 24, per ream, \$4.00; per quire, 25 cents.

White, finished like writing paper, size 19 by 24, per ream, \$4.50; per quire, 30 cents.

Colored paper, for handbills, labels, etc., Yellow, Blue, Red, size 19 by 24, per ream, \$2.50; per quire, 15 cts.

Tinted, Cream, extra fine, size 19 by 24, per ream, \$6.00; per quire, 35 cents.

### ENVELOPES.

	Per 1000	Per 500
Manilla, good quality, No. 5.....	\$1.20	\$0.70
Manilla, good quality, No. 6.....	1.50	.85
Buff, good quality, No. 5.....	1.80	1.00
Buff, good quality, No. 6.....	2.00	1.10
White, business, No. 5.....	2.00	1.10
White, business, No. 6.....	2.30	1.30
White, extra fine, No. 5.....	3.00	1.75
White, extra fine, No. 6.....	3.50	2.00
Pay Envelope, Manilla, size 4 1-4 by 2 9-16 inches.....	.90	.50
Pay Envelope, Amber or Canary, the same size as Manilla.....	1.50	.80
Drug Envelope, Manilla, size 2 by 3 1-4 inches.....	1.00	.60
Drug Envelope, White or Amber, the same size as Manilla.....	1.20	.80

### Dennison's Metal Eylet Tags.

KNOWN TO BE THE BEST IN USE.

No. 1, 1 1-2 by 3 inches, per 1000, \$1.00,	per 100,	.16
No. 2, 1 3-4 by 3 1-2 inch, “	1.30	“ .18
No. 3, 2 by 4 inch, “	1.50	“ .20
No. 4, 2 1-8 by 4 1-2 inch, “	1.85	“ .24
No. 5, 2 3-8 by 5 inch, “	2.10	“ .28



# IMPROVED CASES AND CABINETS.

## Enterprise Type Case.

This case has eighty compartments, and holds one font of capitals and lower case, or two capital fonts. It fits the Enterprise Cabinet, or the Cabinet and Stand sold with the Enterprise Presses. Is well and strongly made, of thoroughly seasoned stock, finished with solid black walnut front.

Size, 13x16 $\frac{3}{4}$  inches.....Price, 50 cents.

## Printers Upper Case.

In this case the ninety-eight compartments are the same as in a regular Printers' Upper Case, only smaller. It will hold two job fonts, or the capitals, small capitals and reference marks of a large Roman font. It is strongly made, and finished with solid black walnut front and jet drawer pull.

Size, 21x16 $\frac{1}{4}$  inches.....Price, 75 cents.

## Printers Lower Case.

In this case the fifty-four compartments are the same as in a regular Printers' Lower Case, only smaller. It is designed for the small letters, figures, punctuation marks, quads and spaces, of a Roman font—this and the Upper Case constituting what is called "a pair." It is also very convenient and used by many for large job fonts. Strongly built, and finished with solid black walnut front and jet drawer pull.

Size, 21x16 $\frac{1}{4}$  inches.....Price, 75 cents.

## Printers Job Case.

This is an improvement on the old style Job Case, and is much liked by those who are using them. It is designed specially for one large job font, upper and lower case, but will hold with ease two small job fonts. Strongly made, and finished with solid black walnut front and jet drawer pull. Contains ninety-eight compartments.

Size, 21x16 $\frac{1}{4}$  inches.....Price, 75 cents.

## Enterprise Cabinet.

Below is represented the Enterprise Cabinet. It contains sixteen Enterprise type cases, and drawer, is thirty-three inches high, and besides serving as a

cabinet will be found useful as a stand on which to make up forms. Is well made of thoroughly seasoned lumber, ornamented and finished in imitation black walnut, or made of solid black walnut if desired.—The prices given include cases.

Imitation Black Walnut.....\$13.00  
Solid Black Walnut.....18.00

## VICTOR CABINET.

The Victor Cabinet, represented below with Case Brackets and drawer on top, is designed to hold our Printers' Upper, Lower, and Job Cases. It is made of carefully selected seasoned stock, has panelled sides, is ornamented and finished in imitation of black walnut, with solid black walnut front, and is by far the best, cheapest, and handsomest Cabinet yet offered to the public. The Case Brackets are an excellent substitute for case stands, and are just the things for printers, amateurs, and publishers of amateur papers. Prices given include cases, but not brackets or drawer on top. When not otherwise ordered an assortment of Upper, Lower, and Job Cases will be sent with each Cabinet; but if the purchaser so desires all Job Cases will be sent, or he can select any number of either style he chooses.

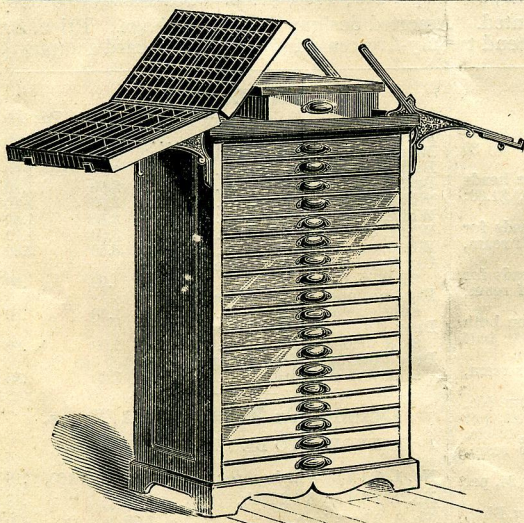
12 Case Victor Cabinet.....\$15.00  
15 " " ".....17.00  
20 " " ".....21.00  
25 " " ".....25.00  
Case Brackets, per pair, extra.....2.00  
Top Drawer, extra.....1.50

## Bronzed Case Brackets.

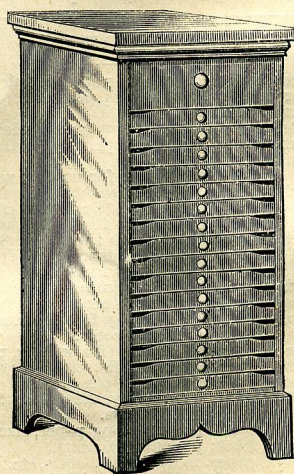
On the Victor Cabinet, below, are represented our Bronzed Iron Case Brackets, lately gotten up for the convenience of printers and amateurs. Their utility will be at once recognized by all in any way engaged in the printing business, and no office will be deemed complete without at least a pair of them. They can be attached to any cabinet, or used in many different places—as on counters, desks, tables, etc. The length of the lower support being adjustable, these Brackets will fit any sized case. They are beautifully designed and handsomely finished in bronze.

Price, per Pair.....\$2.00

**FOR ILLUSTRATIONS OF CASES SEE LAST LEAF OF COVER.**



VICTOR CABINET, WITH BRACKETS.



ENTERPRISE CABINET.



# SPECIMENS OF TYPE.

**B**ELOW we give specimens of a large and varied assortment of PRINTING TYPE, the different styles and sizes of which are suited to every description of plain and ornamental Card and Job Printing. Besides specimens of nearly all the standard type used by general printers, we show specimens of the latest styles of fancy type, which, from their great beauty of design, are well adapted to the wants of the card printer. The type is put up in our own establishment, and the fonts are sufficiently large to be of service not only to the amateur, but to him who carries on an extensive jobbing business.

We invite a comparison of our prices with those of other dealers. Considering the fact that quads and spaces sufficient to set ordinary jobs are furnished with every font, they are MUCH BELOW those of any other house in the country.

**EXPLANATION.**—Over each specimen is given, first, the number of the font, by which to order; second, the name of the type; third, the number of A, or A, or a, the font contains; fourth, price of the font. Figures are included in fonts which show them in the specimen lines.

## PEARL.

### Quads and Spaces with every Font.

No. 1	Gothic. 7 A—10 a	\$1.25
The Enterprise Portable Printing Presses.		26435
No. 2	Antique Extended, heavy face. 9 A	1.75
<b>THE ENTERPRISE</b>		<b>80129</b>
No. 3	Bold Face. 6 A—10 a	1.00
The Enterprise Self-Inking Printing Presses.		892
No. 4	Antique Extended, light face. 7 A—10 a	1.75
The ENTERPRISE Press!		897

## NONPAREIL.

### Quads and Spaces with every Font.

No. 15	Roman. 10 A—4A—60 a	2.20
The ENTERPRISE PORTABLE Printing Press.		1234
[In fonts of 25 lbs. and upwards, 76 cts. per lb.]		
No. 16	Italic. 8 A—20 a	1.45
THE ENTERPRISE Portable Printing Presses.		
No. 17	Imprint Gothic. 10 A	.75
ENTERPRISE PRESS PRINT, J. COOK & CO.		1234567890
No. 18	Gothic Extended. 6 A	.80
<b>ENTERPRISE PRESS!</b>		<b>972</b>
No. 19	Italic Open. 6 A—12 a	1.70
The ENTERPRISE Portable Press.		210
No. 20	Runic. 8 A	1.10
<b>ENTERPRISE PRINTING PRS.</b>		<b>10</b>
No. 21	Round Shade. 6 A—12 a	1.75
The ENTERPRISE Printing Press.		1200
No. 22	Gothic. 8 A—13 a	1.50
<b>The ENTERPRISE Printer!</b>		<b>1200</b>
No. 23	Ornamented. 10 A	1.00
THE ENTERPRISE PORTABLE PRESS.		21

No. 24 Antique Extended, heavy face. 4 A—8 a 1.75

## VICTOR Presses. 72

No. 25	Celtic. 9 A	1.05
ENTERPRISE PORTABLE PRESSES		287
No. 26	Title Expanded. 6 A—12 a	1.65
<b>ENTERPRISE Presses.</b>		<b>290</b>
No. 27	Aldine. 10 A—16 a	1.50
THE ENTERPRISE Portable Printing Press		2490
No. 28	Roman Extended. 6 A—12 a	1.30
The ENTERPRISE Press.		290
No. 29	Broadgauge. 5 A	1.10
<b>ENTERPRISE PRINT, 29</b>		
No. 30	Old Style Antique. 7 A—14 a	1.00
The ENTERPRISE will do your Printing.		12678
No. 31	Light Face Gothic. 10 A—15 a	1.25
The ENTERPRISE Outfits Suit all Classes.		1387640
No. 32	Bold Face. 6 A—10 a	.95
<b>The Enterprise Portable Presses</b>		<b>3467</b>

## BREVIER.

### Quads and Spaces with every Font.

No. 50	Roman. 10 A—4A—60 a	2.30
The VICTOR PORTABLE Printing Press		34
[In fonts of 25 lbs. and upwards, 64 cts. per lb.]		
No. 51	Italic. 8 A—20 a	1.35
The Enterprise Printing Presses, Unexcelled.		
No. 52	Italic Open. 8 A—10 a	2.00
The ENTERPRISE Presses.		120
No. 53	Cloister Shaded. 7 A	1.00
<b>VICTOR PORTABLE PRESS. 3900</b>		
No. 54	Celtic. 9 A	1.35
ENTERPRISE PRESS		6832



No. 55	Bold Face. 6 A—10 a	1.30
<b>The VICTOR Printing Press 296</b>		
No. 56	Gothic Italic. 9 A—9 a	1.50
<i>ENTERPRISE Printing Presses 1876</i>		
No. 57	Antique Extended, light face. 6 A	1.10
<b>ENTERPRISE. 796</b>		
No. 58	Antique. 6 A—12 a	1.10
<b>The VICTOR Printing Presses 624</b>		
No. 59	Oblique Shaded. 5 A—8 A	1.60
<b>THE ENTERPRISE PRESS. 24</b>		
No. 60	Roman Extended. 6 A—12 a	1.70
<b>The VICTOR Press. 290</b>		
No. 61	Round Shade. 6 A—9 a	1.60
<b>The ENTERPRISE Presses. 3678</b>		
No. 62	French Clarendon. 9 A—17 a	1.25
<b>The ENTERPRISE Portable Presses. 23490</b>		
No. 63	Bold Face Italic. 8 A—16 a	1.85
<b>The ENTERPRISE Presses. 210</b>		
No. 64	Title Expanded. 6 A—12 a	1.50
<b>The VICTOR Presses. 39</b>		
No. 65	Antique Extended, heavy face. 4 A—8 a	1.85
<b>VICTOR Press 9</b>		
No. 66	Doric. 8 A—17 a	1.70
<b>ENTERPRISE Printing Press 274</b>		
No. 67	Antique Extended, light face. 5 A—7 a	1.90
<b>VICTOR Press. 384</b>		
No. 68	Gothic. 6 A—12 a	1.40
<b>The ENTERPRISE Presses 390</b>		
No. 69	Aldine. 10 A—16 a	1.65
<b>The ENTERPRISE Printing Press 326</b>		
No. 70	Law Italic. 7 A—40 a	2.90
<i>The Enterprise Self-Inkers. 1356</i>		
[CIRCULAR FONT.]		
No. 71	Broadgauge. 7 A	1.75
<b>VICTOR PRESS 62</b>		

### LONG PRIMER.

Quads and Spaces with every Font.

No. 90	Roman. 10 A—4 A—60 a	3.25
<b>THE ENTERPRISE Printing. 123456</b>		
[In fonts of 25 lbs. and upwards, 56 cts. per lb.]		
No. 91	Italic. 8 A—20 a	2.10
<i>The Enterprise PORTABLE Press.</i>		

No. 92	Antique. 6 A—9 a	1.25
<b>The ENTERPRISE Press. 87</b>		
No. 93	Egyptian. 5 A—6 a	1.55
<b>The VICTOR Presses. 10</b>		
No. 94	Law Italic. 5 A—25 a	2.40
<i>The Enterprise Presses. 357</i>		
No. 95	Albion. 5 A—13 a	2.00
<b>The Enterprise Printing Press. 81</b>		
No. 96	Roman Extended. 4 A—12 a	1.80
<b>THE Enterprise 120</b>		
No. 97	Oblique Shaded. 6 A—9 A	2.10
<b>THE ENTERPRISE! 53280</b>		
No. 98	Skeleton Antique. 10 A—16 a	2.10
<i>The ENTERPRISE PRINTING Presses. Best. 245</i>		
No. 99	Ornamented. 7 A	1.00
<b>ENTERPRISE PRESS!</b>		
No. 100	Aldine. 8 A—16 a	1.75
<b>The ENTERPRISE Presses 648</b>		
No. 101	Celtic. 9 A	1.35
<b>ENTERPRISE PR'S. 4</b>		
No. 102	Lithographic Italic. 4 A—8 a	2.10
<i>The VICTOR Press 294</i>		
No. 103	Rimmed Roman. 6 A—8 a	2.35
<b>The VICTOR Press 92</b>		
No. 104	Antique Extended, light face. 6 A	1.25
<b>ENTERPRIS 8</b>		
No. 105	Gothic Italic. 6 A—9 a	1.30
<i>ENTERPRISE Printing Press 8</i>		
No. 106	Old Style Condensed. 9 A	.95
<b>THE ENTERPRISE PRINTER.</b>		
No. 107	Broadgauge Shaded. 6 A	1.85
<b>ENTERPRISE 7</b>		
No. 108	Italic Open. 6 A—12 a	2.10
<i>The VICTOR Presses. 120</i>		
No. 109	Antique Extended, light face. 4 A—6 a	2.00
<b>The VICTOR 3</b>		
No. 110	Bold Face. 6 A—12 a	1.60
<b>The VICTOR Presses. 170</b>		



No. 111 Ornamented. 6 A 1.00  
**ENTERPRISE PRINTER. 267**

No. 112 Gothic. 6 A—12 a 1.60  
**The Enterprisè Press. 101**

No. 113 Title Expanded. 6 A—12 a 1.95  
**VICTOR Press 210**

No. 114 Antique Extended, heavy face. 3 A—6 a 1.75  
**The ENTE, 4**

*PICA.*

**Quads and Spaces with every Font.**

No. 130 Roman. 10 A—4 A—60 a 4.00  
**VICTOR PORTABLE Presses. 38**

[In fonts of 25 lbs. and upwards, 52 cts. per lb.]

No. 131 Italic. 6 A—12 a 2.20  
*The VICTOR Printing Press.*

No. 132 Light Face Gothic. 8 A—15 a 1.45  
**The ENTERPRISE! Best! 262**

No. 133 Gothic Condensed. 8 A—16 a 2.00  
**The ENTERPRISE Printing 23560**

No. 134 Italic Open. 4 A—8 a 2.35  
*Enterprise Presses. 30*

No. 135 Skeleton Antique. 6 A—12 a 2.10  
**THE ENTERPRISE Printing Press, 236**

No. 136 Title Expanded. 4 A—8 a 1.75  
**The VICTOR 40**

No. 137 Old Style Condensed. 10 A 1.25  
**ENTERPRISE PRINTING**

No. 138 Model Black. 4 A—10 a 2.10  
**The Enterprise Press. 2**

No. 139 Model Black Shaded. 4 A—10 a 2.10  
**The Enterprise Press. 2**

No. 140 Antique. 6 A—12 a 1.95  
**VICTOR Presses. 4780**

No. 141 Law Italic. 6 A—26 a 3.35  
*The Victor Self-Inker 21*

No. 142 Ray Shade No. 2. 5 A 1.50  
**ENTERPRISE. 12**

No. 143 Old Style Ornamented. 5 A—10 a 1.85  
*The ENTERPRISE Presses. 89*

No. 144 Gothic. 6 A—12 a 2.00  
**The Enterprise Press 8**

No. 145 Bold Face. 4 A—8 a 1.75  
**VICTOR Presses. 10**

No. 146 Lithographic Italic. 5 A—12 a 3.00  
*VICTOR Presses 60*

No. 147 Aldine. 6 A—12 a 1.75  
**ENTERPRISE Presses. 10**

No. 148 Ornamented. 5 A 1.20  
**VICTOR PRESSES.**

No. 149 Light Face Roman. 8 A 1.45  
**ENTERPRISE! 1293**

No. 150 Sloping Black Shaded. 4 A—10 a 1.95  
*Enterprise Portable Press. 101*

No. 151 Celtic. 6 A 1.50  
**THE VICTOR. 180**

No. 152 Rimmed Black. 4 A—12 a 2.35  
**The Enterprise Press.**

No. 153 Gothic Italic. 8 A—8 a 1.65  
**ENTERPRISE Presses 39**

No. 154 Round Shade. 4 A—8 a 1.95  
**VICTOR Printing! 7480**

No. 155 Ornamented. 5 A—6 a 1.60  
**Enterprise Printers! 190**

No. 156 Roman Extended. 4 A—8 a 2.20  
**The VICTOR. 3**

No. 157 Oblique Shaded. 5 A—7 a 2.50  
**THE ENTERPRISE 79**

No. 158 Antique Extended, light face. 6 A 1.55  
**ENTERPR 2**

No. 159 Treasury. 3 A—8 a 1.45  
**Those Enterprising Printers. 101**

No. 160 Treasury Open. 3 A—8 a 1.45  
**Those Enterprising Printers. 101**



No. 161 Latin Condensed. 7 A—13 a 1.50  
**THE ENTERPRISE** Printing Presses. 212

No. 162 Roman Shade. 5 A—6 a 2.25  
**THE ENTERPRIS** 7

No. 163 Grotesque Shaded. 5 A—6 a 1.60  
**THE ENTERPRISE PRESS.** 76

No. 164 Broadgauge. 5 A 2.00  
**ENTERPR** 6

No. 165 Doric. 6 A—8 a 1.80  
**THE Enterprise** 93

No. 166 Continental. 7 A—10 a 2.50  
*The ENTERPRISE* 23469

No. 167 Condensed Black. 4 A—12 a 1.90  
**The Enterprise and Victor Presses**

No. 168 Cloister Shaded. 6 A 1.50  
**TME ENTERPRISE** 10

### GREAT PRIMER.

#### Quads and Spaces with every Font.

No. 190 Roman. 7 A—12 a 3.00  
**Enterprise Press.** 10

No. 191 Italic. 4 A—8 a 2.00  
**VICTOR Presses!**

No. 192 Celtic. 5 A 1.90  
**ENTERPR** 79

No. 193 French Clarendon. 6 A—8 a 2.25  
**ENTERPRISE Press.** 10

No. 194 Copperplate Text. 3 A—6 a 2.60  
**The Enterprise,** 34

No. 195 Shaded. 5 A 1.00  
**VICTOR PRINTING PR.**

No. 196 Ray Shaded No. 2. 4 A 2.25  
**VICTOR!** 101

No. 197 Oblique Shaded. 3 A—5 a 3.40  
**THE VICTOR.** 10

No. 198 Fancy Text. 4 A—10 a 1.70  
**The Enterprise Portable Printing Press.**

No. 199 Lithographic Black. 3 A—8 a 2.50  
**The Enterprise Pr.**

No. 200 Egyptian Condensed. 4 A—7 a 1.65  
**VICTOR Printing Press.** 26

No. 201 Antique Condensed. 7 A 1.25  
**THE ENTERPRISE.** 468

No. 202 Grotesque Shaded. 4 A—7 a 2.40  
**THE ENTERPRISE.** 3879

No. 203 Ray Shaded. 3 A—6 a 2.60  
**THE Enterprise** 10

No. 204 French Clarendon Condensed. 6 A—8 a 1.70  
**The ENTERPRISE Self-Inking Presses.** 76

No. 205 Rimmed Roman. 3 A—5 a 2.65  
**THE Victor** 89

No. 206 Albion. 3 A—8 a 2.25  
**Enterprising Amateurs.** 100

No. 207 Old Style Ornamented. 4 A—8 a 2.35  
**The Enterprise Press.** 10

No. 208 Payson Script. 4 A—12 a 3.00  
*The Enterprise Printing* 2345

No. 209 Gothic Condensed. 6 A—12 a 2.15  
**The ENTERPRISE, Best.** 2

No. 210 Collegiate. 4 A—9 a 1.85  
**Enterprise Printing Press.**

No. 211 Rimmed Condensed. 4 A—6 a 2.10  
**ENTERPRISE Presses.** 94



No. 212 Roman Shade. 4 A—6 a 3.50

**THE ENTER 12**

No. 213 Title Text. 4 A—10 a 2.20

**The Enterprise Portable Presses.**

No. 214 Title Text Open. 4 A—10 a 2.20

**The Enterprise Portable Presses.**

No. 215 Aldine. 4 A—8 a 2.00

**The ENTERPRISE 8**

No. 216 Ornamented. 4 A 1.20

**THE ENTERPE**

No. 217 Skeleton Antique. 6 A—12 a 2.40

**ENTERPRISE Printing Press 22**

No. 218 Treasury. 3 A—8 a 2.15

**The Victor Presses. 83**

No. 219 Treasury Open. 3 A—8 a 2.15

**The Victor Presses. 83**

No. 220 Phoenix. 4 A—8 a 1.60

**Victor Printing Presses.**

No. 221 Bostonian. 4 A—4 a 2.40

**THE ENTERPRISE. 39**

No. 222 Title Expanded. 3 A—5 a 2.00

**The SINE 89**

No. 223 Alhambra Shaded. 5 A—8 a 2.00

**The ENTERPRISE Presses. 10**

No. 224 Latin Condensed. 8 A—12 a 1.90

**THE VICTOR Printing Press. 101**

No. 225 Sloping Black Shaded. 4 A—10 a 2.80

**The Enterprise Pres. 10**

No. 226 Black Inlaid. 3 A—6 a 2.30

**The Victor Presses. 63**

No. 227 Ornamented. 4 A 2.00

**THE VICTOR 2**

No. 228 Nubian. 4 A—6 a 3.20

**THE Victor. 10**

No. 229 Italian Black Ornamented. 3 A—8 a 3.00

**The Victor. 120**

*TWO LINE LONG PRIMER.*

**Quads and Spaces with every Font.**

No. 250 Ornamented. 4 A 1.50

**THE VICTOR.**

[With Figures, 40 cents extra.]

No. 251 Ornamented. 4 A—5 a 2.90

**The ENTERP 2**

No. 252 Old Style Condensed. 6 A 1.35

**ENTERPRISE!!**

No. 253 Celtic Ornate. 5 A 1.85

**VICTOR PRESS**

No. 254 Gothic Italic. 4 A—4 a 2.50

**Our PRINTERS 18**

*TWO LINE SMALL PICA.*

**Quads and Spaces with every Font.**

No. 260 Skeleton Antique. 6 A—12 a 3.15

**The Enterprise Presses. 120**

No. 261 Ornamented Text. 3 A—5 a 2.10

**The Victor Press. Best. 7**

No. 262 Ornamented. 4 A 1.80

**ENTERPRIS**



No. 263 Rimmed Black. 4 A—10 a 3.50

**Victor Presses.**

No. 264 Rimmed Black Ornate. 3 A—6 a 3.00

**Victor Presses.**

No. 265 Continental. 3 A—7 a 3.20

**The Enterprise 8**

No. 266 Oblique Shaded. 3 A—5 a 3.50

**THE VICTOR 1**

No. 267 Bostonian. 3 A—3 a 2.70

**ENTERPRISE. 38**

No. 268 Vienna. 4 A—5 a 2.75

**The Victor Press. 10**

No. 269 Unique. 4 A—7 a 1.75

**ENTERPRISE Presses 10**

No. 270 Phidian. 6 A—9 a 1.80

**The ENTERPRISE Printing Press.**

No. 271 Minaret. 5 A—7 a 3.50

**The Enterprise 7**

No. 272 Treasury. 3 A—7 a 2.45

**The Victor Press. 43**

No. 273 Treasury Open. 3 A—7 a 2.45

**The Victor Press. 43**

To. 274 Title Text. 4 A—10 a 2.65

**The Enterprise Portable Press**

No. 275 Title Text Open. 4 A—10 a 2.65

**The Enterprise Portable Press**

No. 276 French Clarendon. 4 A—5 a 2.20

**The ENTERP. 347**

No. 277 Copperplate Text. 3 A—5 a 3.10

**The Enterpris 3**

No. 278 Fancy Text. 3 A—9 a 1.80

**The Enterprise Printing Presses.**

No. 279 Fancy Text Shaded. 3 A—9 a 1.80

**The Enterprise Portable Presses**

No. 280 Antique Pointed. 3 A—5 a 2.40

**Our PRES 2**

No. 281 Card Text. 3 A—8 a 1.50

**The Enterprise Portable Printing Presses.**

No. 282 Ornamented. 3 A—5 a 2.10

**ENTERPRISE PRESS. 896**

No. 283 Model Black. 3 A—5 a 2.85

**Enterprise! 40**

*TWO LINE PICA.*

**Quads and Spaces with every Font.**

No. 300 Payson Script. 4 A—12 a 3.75

**Enterprise Presses! 44**

No. 301 Collegiate. 3 A—6 a 2.85

**The Enterprise Press.**

No. 302 Celtic. 3 A 2.55

**VICTOR. 1**

No. 303 Rimmed Condensed. 4 A—6 a 3.50

**VICTOR Press. 12**

No. 304 Black Ornamented. 3 A—8 a 3.10

**The Victor Press. 10**



No. 305 Old Style Ornamented. 3 A—7 a 3.20

The Enterprise 10

No. 306 Gothic Condensed. 4 A—8 a 2.50

The ENTERPRISE 8

No. 307 Ray Shaded. 3 A—7 a 4.25

The ENT. 10

No. 308 Phoenix. 3 A—5 a 1.95

Enterprise Presses!

No. 309 Latin Condensed. 6 A—8 a 2.25

The VICTOR Press. 1290

No. 310 Nubian. 3 A—4 a 4.00

ENTERpr. 6

No. 311 Antique Condensed. 5 A 1.70

ENTERPRISE! 380

No. 312 Old Style Condensed. 4 A 1.25

ENTERPRISE

No. 313 French Clarendon Condensed. 5 A—8 a 2.25

The ENTERPRISE Printing Press. 94

No. 314 Gothic. 4 A 1.30

ENTERPRISE!

No. 315 Ionic. 4 A—6 a 3.60

THE Victor 14

No. 316 Doric. 4 A—6 a 3.90

THE Vict 24

## TWO LINE ENGLISH.

Quads and Spaces with every Font.

No. 330 Condensed Roman. 4 A—8 a 3.50

THE Victor. 120

No. 331 Text Ornamented. 2 A—6 a 2.75

Victor Pressmen.

No. 332 Title Text. 3 A—7 a 3.30

Victor Job Presses.

No. 333 Title Text Open. 3 A—7 a 3.30

The Victor Job Press

No. 334 Eureka Text. 2 A—5 a 3.25

The Enterprise

No. 335 Celtic. 4 A 3.25

ENTE 2

No. 336 Albion. 3 A—6 a 3.60

The Enterprise 58

No. 337 Egyptian Condensed. 4 A—6 a 3.75

The VICTOR. 973

No. 338 Fancy Text. 4 A—9 a 3.10

The Enterprise Presses.

No. 339 Fancy Text Shaded. 4 A—9 a 3.10

The Enterprise Presses.

No. 340 Celtic Ornate. 3 A 2.25

VICTOR



No. 341 Engravers Text. 3 A—6 a 3.10

**Enterprise Press.**

No. 342 Engravers Text Ornate. 3 A 6 a 3.10

**Enterprise Press.**

No. 343 Unique. 3 A—5 a 2.65

**THE Enterprise. 100**

No. 344 Treasury Open. 2 A—5 a 3.20

**Victor Press. 76**

No. 345 Combination. 4 A—4 A 3.50

**THE ENTERPRISE. 97**

No. 346 Vienna. 4 A—5 a 3.50

**The Victor Press 10**

*TWO LINE GREAT PRIMER.*

Spaces and Quads with Every Font.

No. 360 Roman Condensed. 4 A 2.75

**VICTOR 364**

No. 361 Model Script. 4 A—12 a 6.15

*Enterprise Pr. 52*

No. 362 Siderographic Ornate. 3 A—7 a 2.80

**The Enterprise. Best. 10**

No. 363 Unique. 3 A—6 a 3.60

**The Enterprise 27**

No. 364 Engravers Text. 2 A—4 a 3.00

**The Enterprise**

No. 365 Engravers Text Ornate. 2 A—4 a 3.00

**The Enterprise**

No. 366 Antique Condensed. 5 A 2.50

**THE VICTOR. 6**

No. 367 Treasury Open. 2 A—4 a 3.25

**Our Press. 10**

No. 368 Fancy Text. 3 A—6 a 3.35

**The Enterprise Press**

No. 369 Fancy Text Shaded. 3 A—6 a 3.35

**The Victor Presses.**

No. 370 Shaded. 3 A 3.00

**VICTOR. 10**

No. 371 Ornamented. 3 A—4 a 3.75

**THE ENTERPRISE**

No. 372 French Clarendon Condensed. 4 A—7 a 3.15

**The ENTERPRISE Press. 9**

No. 373 Eureka Text. 3 A—6 a 5.00

**Victor Press**



No. 374 French Clarendon Shaded. 3 A—5 a 4.35

**The VICTOR 8**

No. 375 Phidian. 4 A—6 a 2.75

**THE Enterprise Presses.**

No. 376 Rimmed Condensed. 3 A—4 a 3.75

**THE Victor 12**

No. 377 Gothic Condensed. 4 A—6 a 3.50

**The ENTER 98**

*CENTENNIAL SCRIPT.*

Quads and Spaces with every Font.

No. 390 English. 4 A—16 a 2.75

*Victor Printing Press. Best! 25*

No. 391 Great Primer. 4 A—16 a 4.20

*Enterprise Printing! 12545*

No. 392 Two Line Small Pica. 4 A—12 a 4.50

*Enterprise Press. 1876*

No. 393 Two Line English. 3 A—10 a 6.00

*Victor Press. '76*

*TEXT ORNATE.*

Quads and Spaces with every Font.

No. 395 Two Line English. 3 A—7 a 2.25

*The Victor and Enterprise Presses.*

No. 396 Two Line Paragon. 2 A—5 a 3.00

*The Victor Printing Press*

No. 397 Four Line Pica. 2 A—5 a 4.20

*Enterprise and Victor*

Centennial Script and Text Ornate are shown in series.

*MISCELLANEOUS SPECIMENS.*

Quads and Spaces with every Font.

No. 450 Two Line Pica Franklin Ray Shade. 3 A—4 a 4.25

**The VICTOR Pres**

No. 451 Two Line Great Primer Doric. 3 A—5 a 4.50

**ROVING Printer 12**

No. 452 Two Line Great Primer Nubian. 2 A—3 a 4.90

**VICTOR Press 68**

No. 453 Four Line Pica French Clarendon Condensed. 3 A—5 a 4.10

**ENTERPRISE and the VICTOR 24**



No. 454

Four Line Pica Black Rayed Ornamented. 2 A—5 a

5.80

**The Enterprise Presses.**

No. 455

Four Line Pica Gothic Condensed. 3 A—5 a

5.10

**The ENTERPRISE 398**

No. 456

Four Line Pica Eureka Text. 2 A—4 a

6.00

**The Enterprise Press.**

No. 457

Four Line Pica Ionic. 3 A—5 a

7.50

**Enterpr. 14**

No. 458

Four Line Pica Title Text. 3 A—5 a

7.50

**The Enterprise Presses.**

No. 459

Four Line Pica Antique Condensed. 3 A

3.75

**THE ENTERPRISE 54**

No. 460

Text Ornamented. 3 A—6 a. Suitable for Newspaper Headings. Per word, 50c.

7.15

**The American Printer.**

No. 461

Five Line Pica Heading Script. 2 A—4 a. Per word, 60c.

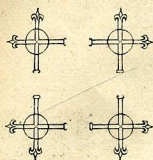
10.00

*Home Insurance Co*

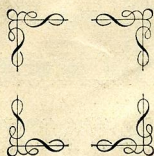


# CORNERS, OVALS AND CIRCLES.

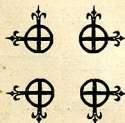
Set No. 14, 25c.



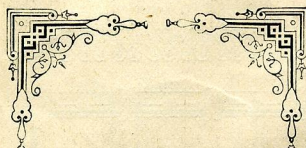
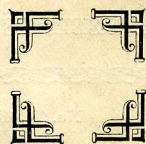
Set No. 65, 25c.



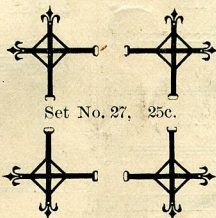
Set No. 34, 25c.



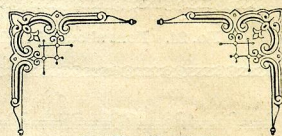
Set No. 41, 30c.



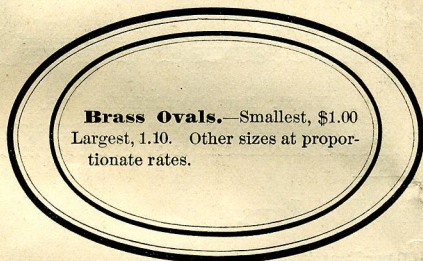
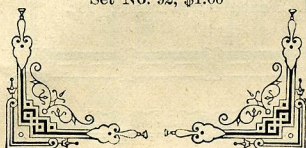
Set No. 92, \$1.00



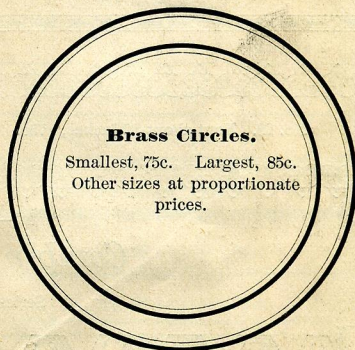
Set No. 27, 25c.



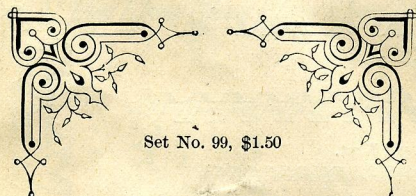
Set No. 87, \$1.00



**Brass Ovals.**—Smallest, \$1.00  
Largest, 1.10. Other sizes at proportionate rates.

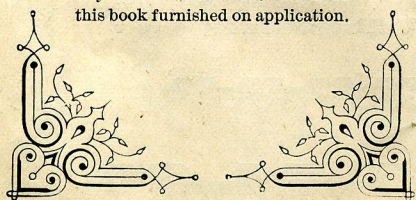


**Brass Circles.**  
Smallest, 75c. Largest, 85c.  
Other sizes at proportionate prices.



Set No. 99, \$1.50

Any set of corners not shown in this book furnished on application.



UNRIVALLED

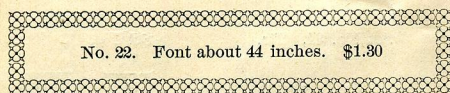
**VICTOR PRESS.**

We invite all those who contemplate purchasing a Press, to examine carefully the merits of the VICTOR. It possesses advantages over all others, and in no respect is it inferior to any.

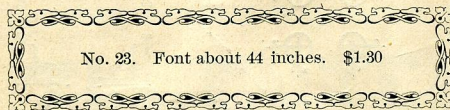
Set No. 82, including four corners & four center pieces, 50 cents.



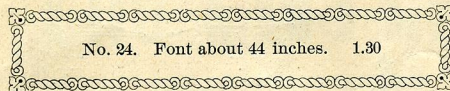
## MINIONETTE BORDERS.



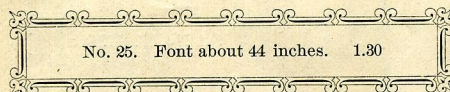
No. 22. Font about 44 inches. \$1.30



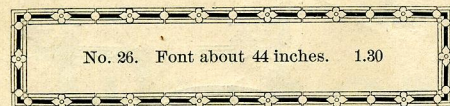
No. 23. Font about 44 inches. \$1.30



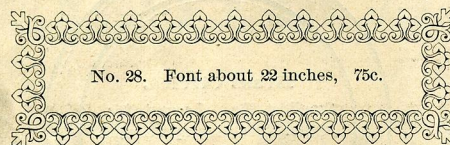
No. 24. Font about 44 inches. 1.30



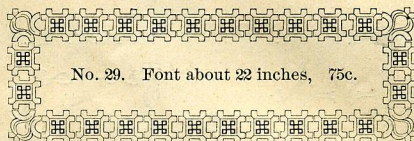
No. 25. Font about 44 inches. 1.30



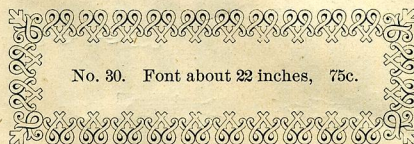
No. 26. Font about 44 inches. 1.30



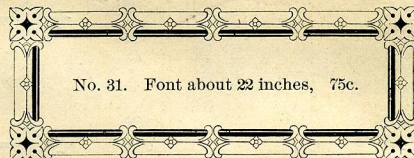
No. 28. Font about 22 inches, 75c.



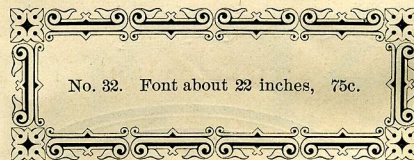
No. 29. Font about 22 inches, 75c.



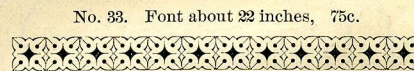
No. 30. Font about 22 inches, 75c.



No. 31. Font about 22 inches, 75c.



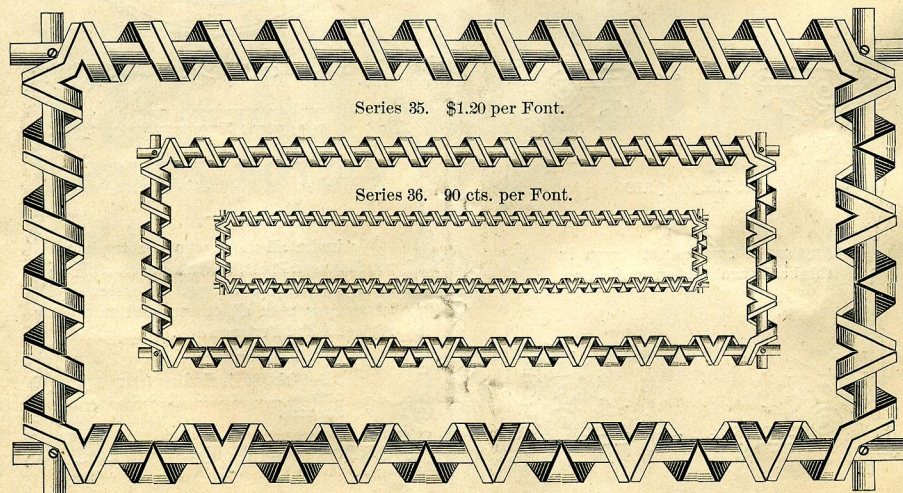
No. 32. Font about 22 inches, 75c.



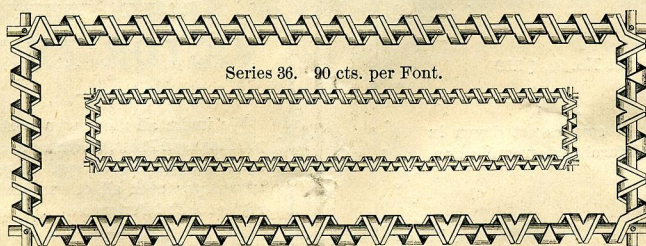
No. 33. Font about 22 inches, 75c.

## Combination Borders.

Series 34. \$1.50 per Font.



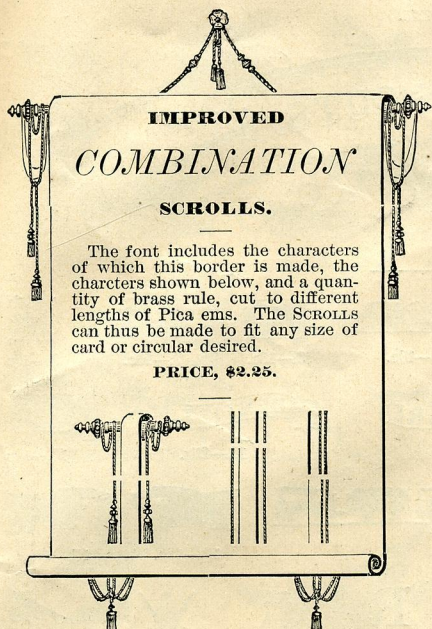
Series 35. \$1.20 per Font.



Series 36. 90 cts. per Font.







#### INITIAL LETTERS.

Series A, 10 cents each. \$1.50 per Set.



Series B, 15 cents each. \$2.00 per Set.



Series C, 15 cents each. \$2.00 per Set.



Series D, 20 cents each. \$2.50 per Set.



Series E, 20 cents each. \$2.00 per Set.



#### Brass and Ornamental Dashes.

Price, 15 Cents Each.

No. 1

No. 2

No. 3

No. 4

No. 5

No. 6

No. 7

#### BRASS RULE.

No. 124, 7 cents per foot.

No. 140, 12 cents per foot.

No. 181, 18 cents per foot.

No. 144, 25 cents per foot.

No. 150, 28 cents per foot.

No. 163, 25 cents per foot.

No. 167, 33 cents per foot.

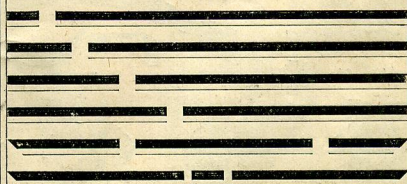
No. 172, 50 cents per foot.

No. 221, 28 cents per foot.

No. 225, 45 cents per foot.

#### Labor-Saving Brass Rule.

The rule will be found very useful to Drug-gists, Manufacturers, and all who have many labels to print. The mitted pieces vary in length from two to five ems pica; unmitted pieces one to eighteen ems pica. Put up in one, two, and three pound fonts, at \$2 per lb.





# Logotypes BUSINESS CUTS. Ornaments



No. 2.—8c.



3.—8c.



4.—10c.



5.—10c.



6.—10c.



7.—10c.



8.—10c.



9.—12c.



10.—12c.



11.—25c.



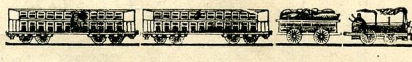
12.—25c.



13.—10c.



14.—25c.



15.—40c.



16.—12c.



17.—12c.



18.—10c.



19.—10c.



20.—10c.



21.—10c.



22.—10c.



23.—10c.



24.—10c.



25.—10c.



26.—10c.



27.—15c.



28.—12c.



29.—15c.



30.—20c.



31.—10c.



32.—15c.



33.—15c.



34.—10c.



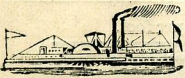
35.—12c.



36.—10c.



37.—20c.



38.—25c.



39.—15c.



40.—25c.



41.—10c.



42.—20c.



43.—20c.



44.—15c.



45.—15c.



46.—20c.



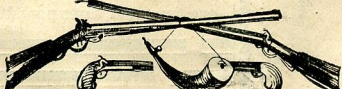
47.—15c.



48.—15c.



49.—20c.



50.—50c.



51.—30c.



52.—20c.



53.—20c.



54.—15c.



55.—25c.



56.—25c.





57.—15c.



58.—15c.



59.—15c.



60.—15c.



61.—20c.



62.—15c.



63.—20c.



64.—20c.



65.—15c.



66.—25c.



67.—25c.



68.—50c.



69.—40c.



70.—40c.



71.—40c.



72.—40c.



73.—40c.



74.—15c.



75.—20c.



76.—40c.

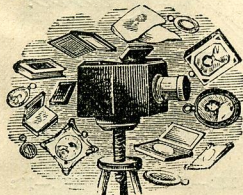


77.—40c.

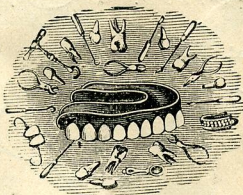


78.—40c.

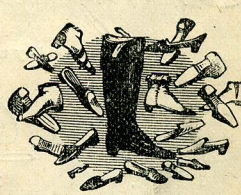
*Business Cuts for any Trade, this size, 45 cents each.*



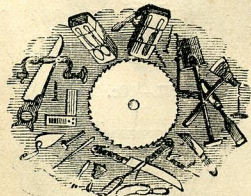
79.—PHOTOGRAPHER.



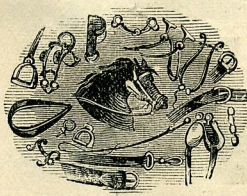
80.—DENTIST.



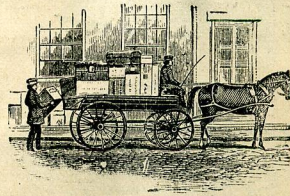
81.—BOOT AND SHOE DEALER.



82.—HARDWARE.



83.—SADDLER.



84.—EXPRESSMAN.



*Mr. No. To Dr. Cr. or Bearer*  
 85.—6c. 86.—6c. 87.—6c. 88.—6c. 89.—6c. 90.—6c. 91.—15c.

*Bought of Received of Pay to or Order*  
 92.—20c. 93.—20c. 94.—15c. 95.—15c.

*Pay to the Order of Dollars Office of 187*  
 96.—30c. 97.—15c. 98.—15c. 99.—6c.

*West Meriden, Conn. Mary A. Hawes.*  
 100.—40c. Name altered to suit. 101.—40c. Name altered to suit.

*Mr. No. To Dr. Cr.*  
 102.—10c. 103.—10c. 104.—10c. 105.—10c. 106.—10c. 107.—10c.

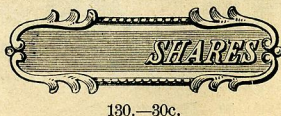
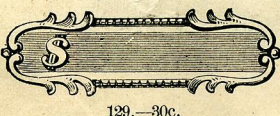
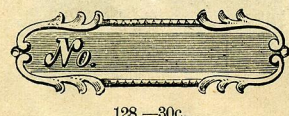
*or Bearer Bought of Received of*  
 108.—30c. 109.—30c. 110.—30c.

*Pay to or Order Office of 187*  
 111.—20c. 112.—25c. 113.—25c. 114.—10c.

*Pay to the Order of Dollars Due*  
 115.—40c. 116.—20c. 117.—15c.

*Hartford, Conn. Henry Lane.*  
 118.—50c. Any name desired. 119.—50c. Any name desired.

*To Dr. 187 No \$*  
 120.—15c. 121.—15c. 122.—15c. 123.—15c. 124.—10c.





Bought of

131.—30c.

Bought of

132.—30c.

BOUGHT OF

133.—30c.

BOUGHT OF

134.—30c.

OFFICE OF

135.—40c.

Bought OF

136.—35c.

Office of

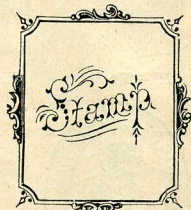
137.—30c.

OFFICE OF

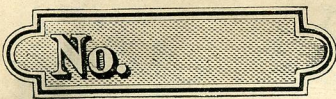
138.—30c.

OFFICE of

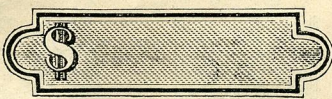
139.—30c.



142.—50c.



140.—30c.



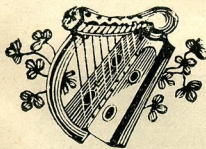
141.—30c.

Received

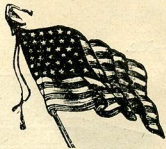
143.—75c.

Received

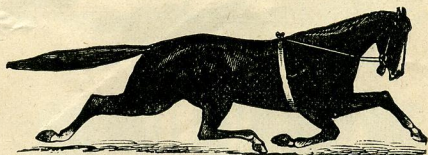
144.—75



145.—30c.



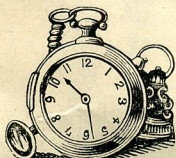
146.—25c.



147.—75c.



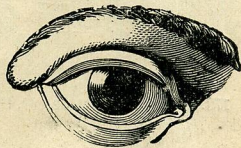
148.—25c.



149.—25c.



150.—35c.



151.—30c.

STOCKABLE

152.—75c.

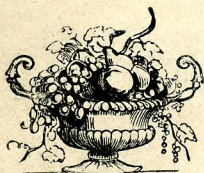
RECEPTION

153.—40c.

CEREMONY

154.—40c.

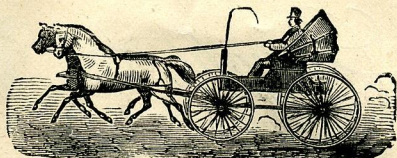




155.—40c.



156.—25c.



157.—50c.



158.—25c.



159.—25c.



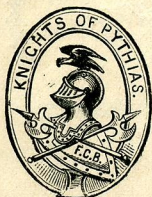
160.—30c.



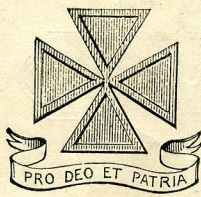
161.—35c.



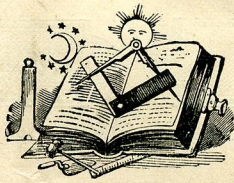
162.—35c.



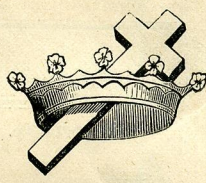
163.—35c.



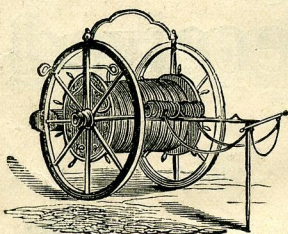
164.—50c.



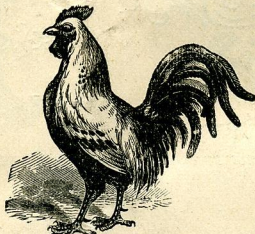
165.—40c.



166.—50c.



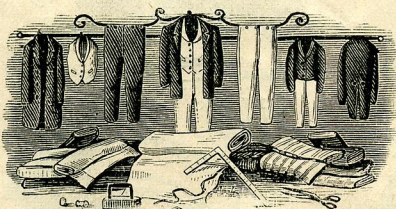
167.—50c.



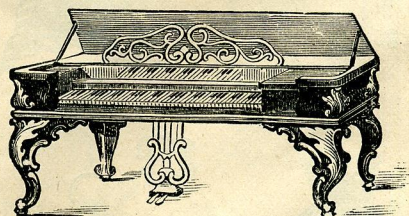
168.—50c.



169.—50c.



170.—75c. Any Trade cut, this size, same price.



171.—75c.

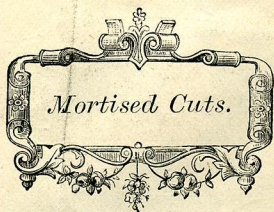


172.—50c.

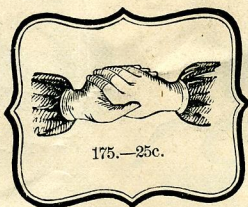


173.—75c.





174.—75c.



175.—25c.



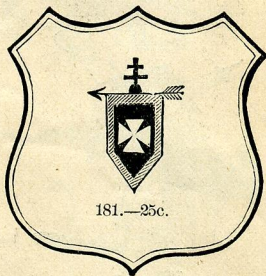
177.—60c.



178.—40c.

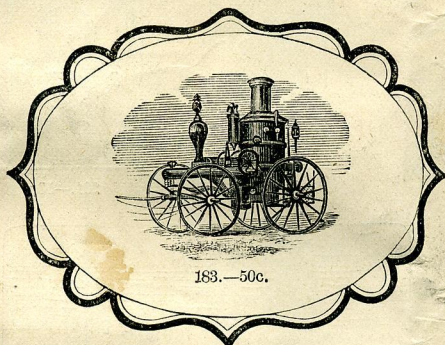


179.—25c.



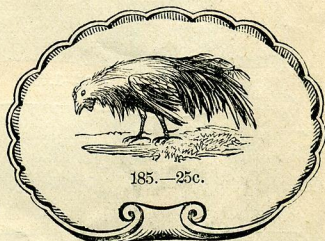
181.—25c.

182.—60c.



183.—50c.

184.—1.25.

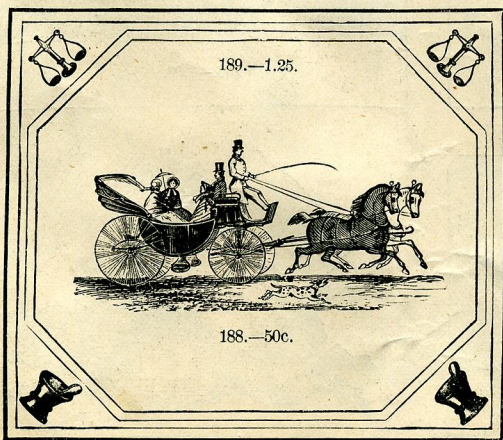


185.—25c.

186.—50c.



187.—50c.



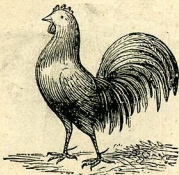
189.—1.25.

188.—50c.



190.—1.00.

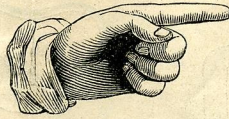




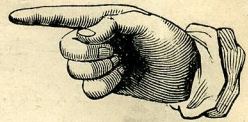
191.—30c.



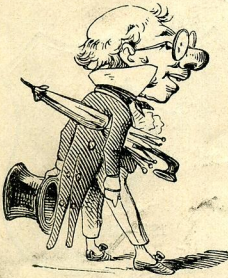
192.—35c.



193.—25c.



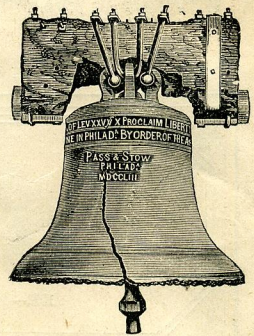
194.—25c.



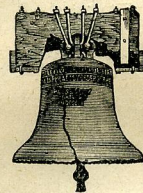
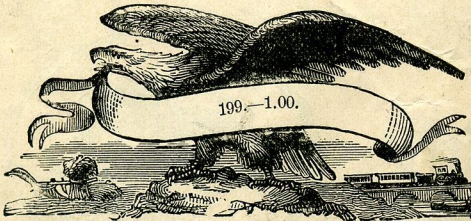
195.—50c.



196.—50c.



197.—50c.



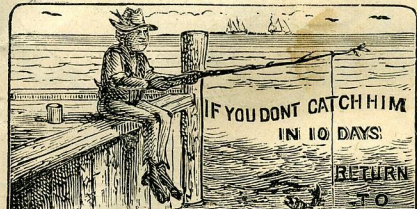
200.—25c.



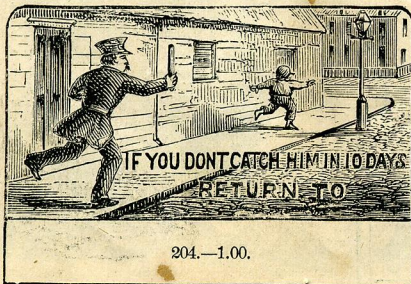
201.—50c.



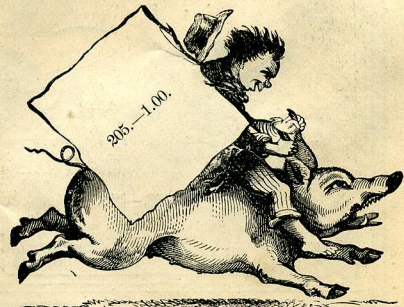
202.—1.00.



203.—1.00.



204.—1.00.



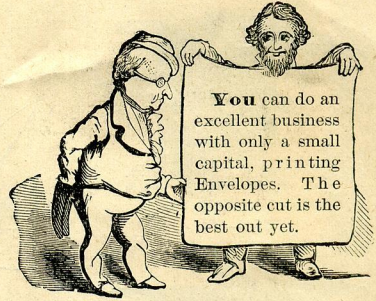


If you don't catch him in TEN DAYS, come back to

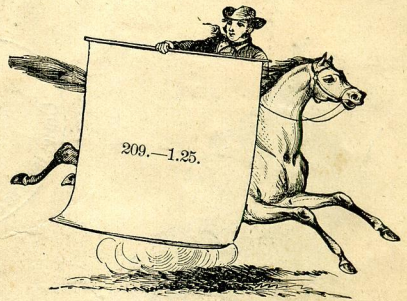
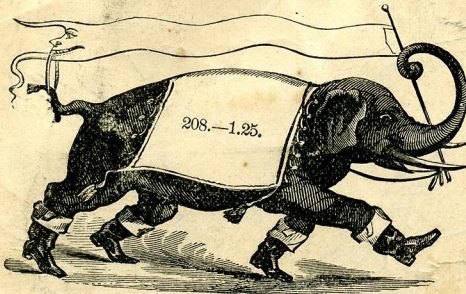


206.—60c.

**J. COOK & COMPANY,**  
WEST MERIDEN, CONN.



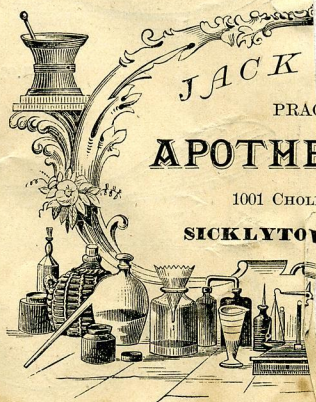
207.—1.09.



210.—1.25. Any Trade cut this style and size, same price.



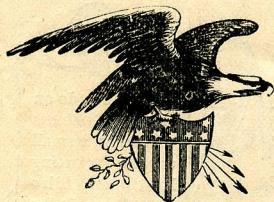
212.—1.00.



213.—

This portion  
of the original  
was cut out

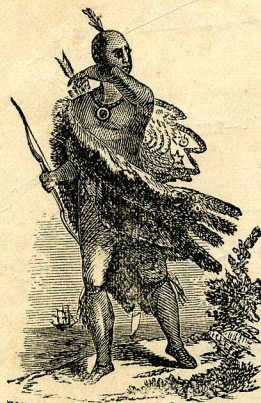




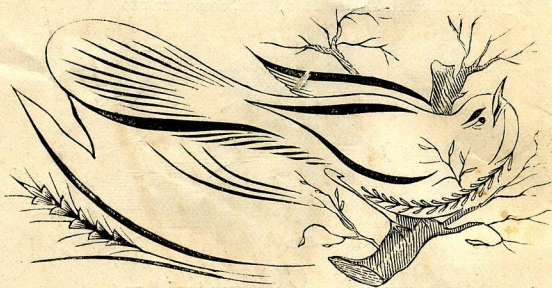
214.—50c.



215.—30c.



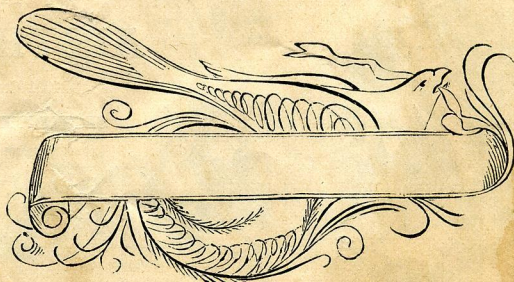
216.—1.00.



218.—1.00.



220.—1.00.

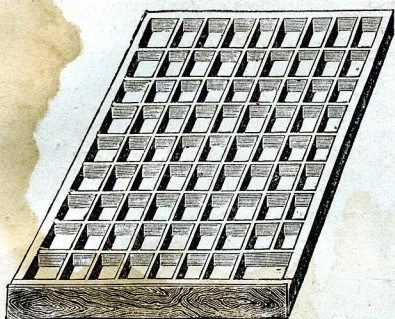


221.—1.00.

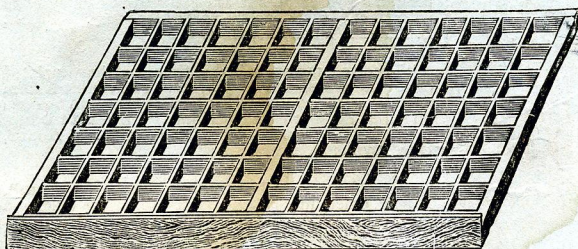
This portion  
of the original  
was cut out



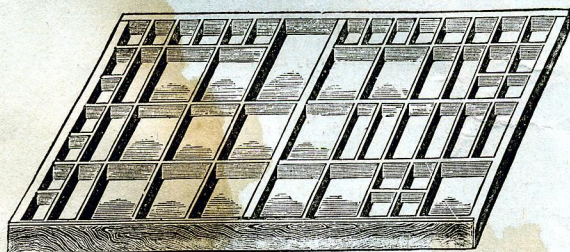
*SUPERIOR TYPE CASES.*



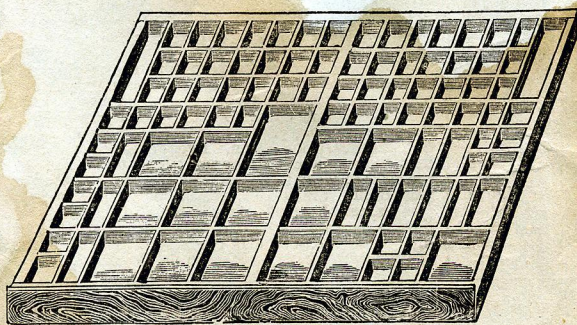
Size, 13x16 $\frac{3}{8}$  inches.—**Enterprise Case.**—Price, 50 cents.



Size, 21x16 $\frac{1}{4}$  inches.—**Upper Case.**—Price, 75 cents.



Size, 21x16¼ inches.—**Lower Case.**—Price, 75 cents.



Size, 21x16¼ inches.—**Job Case.**—Price, 75 cents.

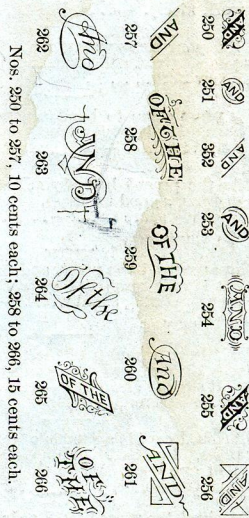
## The Wood Engraver's Cabinet

Every boy with a printing press has frequent occasion to make small wood cuts, such as fancy letters, monograms, emblems, trade marks, autographs, etc.

The **ENGRAVER'S CABINET** is a box containing a book of instruction in drawing and engraving on wood, with the necessary tools and appliances, and several pieces of engravers' wood prepared for use.

The instruction is so definite, and the material so complete, that any ingenious boy can with a little practice make many simple wood cuts of real value, and the practice may often develop an unexpected degree of talent in this direction.—**Price, \$2.00.**

**NEW LOGOTYPES.**



Nos. 250 to 257, 10 cents each; 258 to 266, 15 cents each

### Book and Newspaper Type.

Founts nos. 15, 50, 90, 130, are regular book and newspaper type, and in founts of 25 pounds and over sell for 76c, 64c, 56c, and 52c per pound. A pound will set from 3½ to 4 square inches of solid matter; from 5 to 5½ square inches if spaced out. Estimates cheerfully furnished on material necessary for printing amateur papers.

**Sorts.**—Figures, fractions, and commercial signs for the above fonts, furnished in any quantity at 35 cents per 100. Lots of 50 or less, 20 cents.

Sorts for any font shown in catalogue under Four-Line Pica, furnished at the rate of 15 cents per letter. Sorts for Four-Line Pica fonts, 25 cents per letter.



## WHAT IS SAID OF OUR PRESSES.

THE following are a few of the hundreds of commendatory notices of our Presses, received from patrons who are using them. The words of praise which nearly every press sold elicits from the purchaser, are convincing evidence of the superiority of our machines. Read the following, which are entirely unsolicited, most of them accompanying orders for other goods:

"Press works splendidly."—O. B. HAVIS, Dandridge, Tenn.

"My press works like a charm."—D. C. LAYARD, Adrian, Mich.

"Press works to my entire satisfaction."—HORACE U. KENNEDY, Gallipolis, Ohio.

"Press was received in good order, and suits me perfectly."—WILL M. BEITER, Charlotte, Mich.

"I have received press in good order. It works nicely."—JOHNNIE KNOBlauch, Metamora, Ill.

"I am using one of your small size presses, and it does work nicely."—J. M. WHILE, Monroe, Mich.

"I like your press very much. Have printed those cards you sent me, and thousands besides."—CHARLES HALL, New Berlin, N. Y.

"My press came to hand several days ago, and I have been using it pretty freely and to my entire satisfaction, ever since."—L. L. GARSWELL, Savannah, Ga.

"Like the press I had of you last spring first rate, and am doing a good business. Have work enough to occupy all my spare time."—F. W. BREWSTER, North Sterling, Conn.

"Have received the press, and find it very satisfactory. It is well adapted—better than any others we have seen—to doing small work."—HAYDEN & RICH, Burlington, Vt.

"I send you samples of the two first jobs done on the press I had of you, that you may see that it is all right. It suits me exactly."—GEORGE H. HOTCHKISS, Printer, New Haven, Conn.

"Enclosed card is a sample of my first job done on your press. I printed four hundred and sixty [hand-inker] in one hour. I like the press very much."—BRUCE G. CROSSMAN, Wappinger's Falls, N. Y.

"Received the press that I ordered from you, last evening, all in good order and complete. Enclosed find specimen of work done in a short time after receiving it. I am very much pleased with it."—G. W. REMINGTON, Sparta, Ohio.

"You remember I bought an ENTERPRISE press of you about two months ago. I have seen several presses, but I cannot find one that works as well as the ENTERPRISE. I am very much pleased with my press."—WM. GEBRATH, 686 Eighth Ave., New York.

"The press works very well indeed. I have used the 'Novelty' and the 'Young America' presses, but I like yours better than either. Enclosed I send sample of printing done within half an hour after receiving the press."—J. C. GREEN, So. Norwalk, Conn.

"Press received in good order. I am delighted with it. Have been printing with the — for three years, but as soon as I got your ENTERPRISE, gave the — away. I think yours is the finest portable press in the market."—R. LAMB, Norfolk, Va.

"It really seemed impossible that a press could be made for three dollars that would do good work, but having tested the ENTERPRISE, I know that the fact has been accomplished. ANY ONE who doubts, can be convinced by a trial."—Z. C. WHIPPLE, Principal of Whipple's School for Deaf Mutes, Mystic River, Conn.

"Press you shipped me came to hand all right, yesterday, and I must say that it is the best press I ever saw for the price. I have a press of another make that prints about the same size, which cost me nearly twice as much and will not do as good work as the one I got of you."—M. H. PRIDE, Lackawack, N. Y.

"The printing press arrived last Saturday. Am well pleased with it, and think it is just the 'Boss' machine for the work I intend doing. Have not yet printed a full form, but am satisfied it can be done without any trouble on the part of the press."—FRANK L. TEMPLE, Woodville, Mass.

"Received my press in due time, and have printed cards, no teheads, envelopes, etc. I can print a form as large as the chase will hold as good as can be done on a much higher priced machine. I think it the best press for the money ever made."—GEO. S. HOGLE, Gloversville, N. Y.

"Was kept very busy after receiving my outfit, having much more trade than two other offices—a 'Model' and an 'Excelsior.' Probably the ENTERPRISE does more satisfactory work. Enclosed you will find samples of work done on my press. Have printed a full form without springing it."—LOUIS C. SCHLEIP, Mount Pleasant, Iowa.

Mr. SCHLEIP in another letter says: "The press I bought of you is in splendid order. I think it is unrivaled for power, as I have been using it for almost full chase forms for a long time, and it has not sprung. I have some very fine specimens of printing.

"The press bought of you came duly to hand, and from present experience can say it works nicely in every respect. We are usually rather conservative in expressing our selves, but we can heartily recommend your presses to those in want. We had expected some trouble in its operation, but our only annoyance was the usual one with inexperienced hands, in setting the type. But we really feel proud of the press."—W. P. GROUT & SON, Wilson, N. Y.

"We have tested the presses manufactured by J. Cook & Co., by actual use in fine and difficult work, and find them 'all right,' fully sustaining the claims of the makers. For amateur work they are superior to anything we have ever used."—A. F. HINMAN, Job Printer and Stationer, West Meriden, Conn.

"No press has ever appeared in the market as a candidate for public favor which so soon met the unqualified and surprising success which has attended the introduction of the ENTERPRISE, a new portable amateur printing press, manufactured by J. Cook & Co., West Meriden, Conn. Every one who has examined these presses pronounces them first-class. For the class of work to which they are adapted, they are perfection. Small jobs, which hardly pay on large presses, can be made to pay handsomely on these presses, and they are rapidly coming into use in large establishments, which is the best endorsement they could possibly have."—HARTFORD COURANT.



**Numbers and Prices in this Edition of our Catalogue Cancel those of all former Editions. Numbers of nearly all Articles have been changed, and Prices greatly Reduced.**